

Introduction

Evacuation Overview Map

North Evacuation Map

Unit 13 Evacuation Map

Unit 12 Evacuation Map

Unit 11 Evacuation Map

North Central Evacuation Map

Unit 10 Evacuation Map

Unit 9 Evacuation Map

Unit 8 Evacuation Map

South Central Evacuation Map

Unit 7 Evacuation Map

Unit 6 Evacuation Map

Unit 5 Evacuation Map

Unit 4 Evacuation Map

South Evacuation Map

Unit 3 Evacuation Map

Unit 2 Evacuation Map

Unit 1 Evacuation Map

Notes



Evacuation Appendix

Evacuations of structures in the City of Boulder can be called for by any public safety official operating on the incident. The Boulder Police Department is responsible for helping to ensure that structures have been evacuated. **ONLY RESIDENCES WITHIN THE CITY OF BOULDER CAN BE USED WITH THIS SYSTEM.** Coordination with Boulder County Dispatch will be necessary for Rocky Mountain Fire Authority, Fourmile Fire District, Boulder Rural Fire District, Sunshine Fire District and Boulder Mountain Fire Authority.

The City of Boulder Police and Fire Communications Center is responsible for Everbridge notifications to residents of the city of Boulder. In order to simplify the calculation of evacuation areas, predetermined areas have been laid out in three two geographic zones within each planning unit.

Area 1

Area 1 (western edge of each zone) evacuations are the most critical residents to evacuate as there are generally little to no sizeable defensible features and poor access. All Area 1 evacuations should occur before initiating any Area 2 evacuations or notifications.

Area 2

Area 2 evacuations are generally precautionary to residents as there are generally sizeable city streets that create good defensible features, good access, and plentiful water supplies. No Area 2 evacuations should occur before Area 1 evacuations are complete.

Unit evacuations (This option should not be used commonly)

The entire unit west of Broadway can be used for evacuations under extreme circumstances. Note that the polygons used for this type of notification will not differentiate the residents closest to the urban interface.

Messages

Three types of messages should be used to communicate threats to residents.

Notification

Notifications should be used to advise residents that there is a fire in their area, and that preparations should be made in case evacuation order is given. Notifications should be made to all residents in area 1, and then to Area 2 for each applicable unit.

Voluntary evacuations

Residents are encouraged to evacuate the area. Voluntary evacuations can be requested for area 1, and then area 2 for each applicable unit. A voluntary evacuation of area 1 will automatically trigger a notification of area 2.

Mandatory evacuations

Residents are to evacuate the area. Mandatory evacuations in area 1 should automatically trigger voluntary evacuations of area 2, or Mandatory evacuations can be ordered for area 1, then area 2.

Example 1:

A fire burning on the south end of the city:

A sample message to the City of Boulder Dispatch might consist of “Mandatory evacuation” of Area 1 of Units 1, 2 and 3. This would result in mandatory evacuations of **Area 1** of Unit 1, 2 and 3 and “Voluntary evacuations” of **Area 2** of Unit 1, 2 and 3.

Example 2:

A fire burning on the south end of the city:

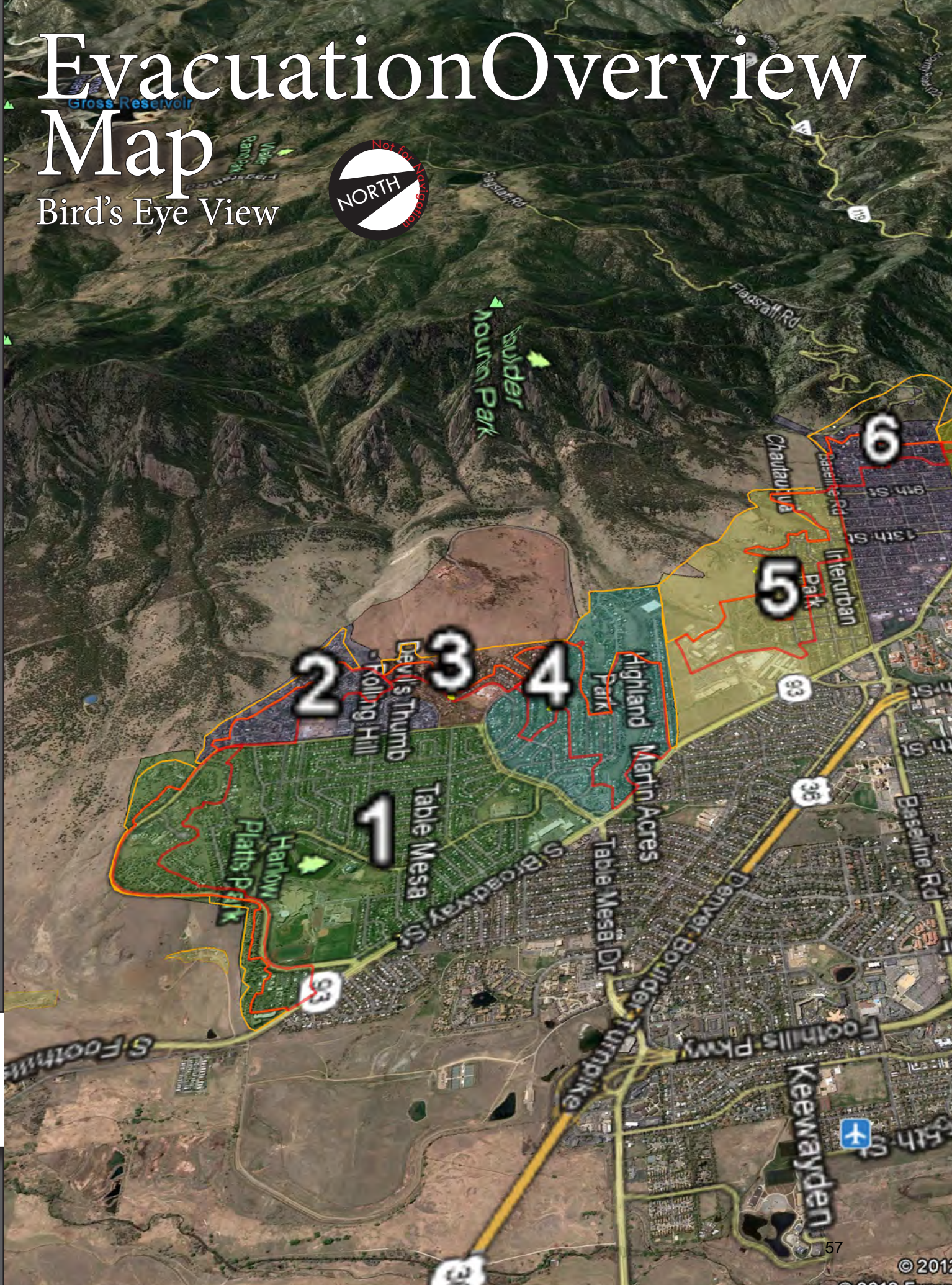
A sample message to the City of Boulder Dispatch might consist of “Voluntary evacuation” for **Area 1** of Unit 2 and “Notification” for Area 1 of Unit 2 and 3.

This would result in a voluntary evacuation of Area 1 of Unit 2, and “Notification” in Area 2 of Unit 2 and “Notification” in Area 1 and 2 of Units 1 and 3.

Evacuation Overview Map

Map

Bird's Eye View





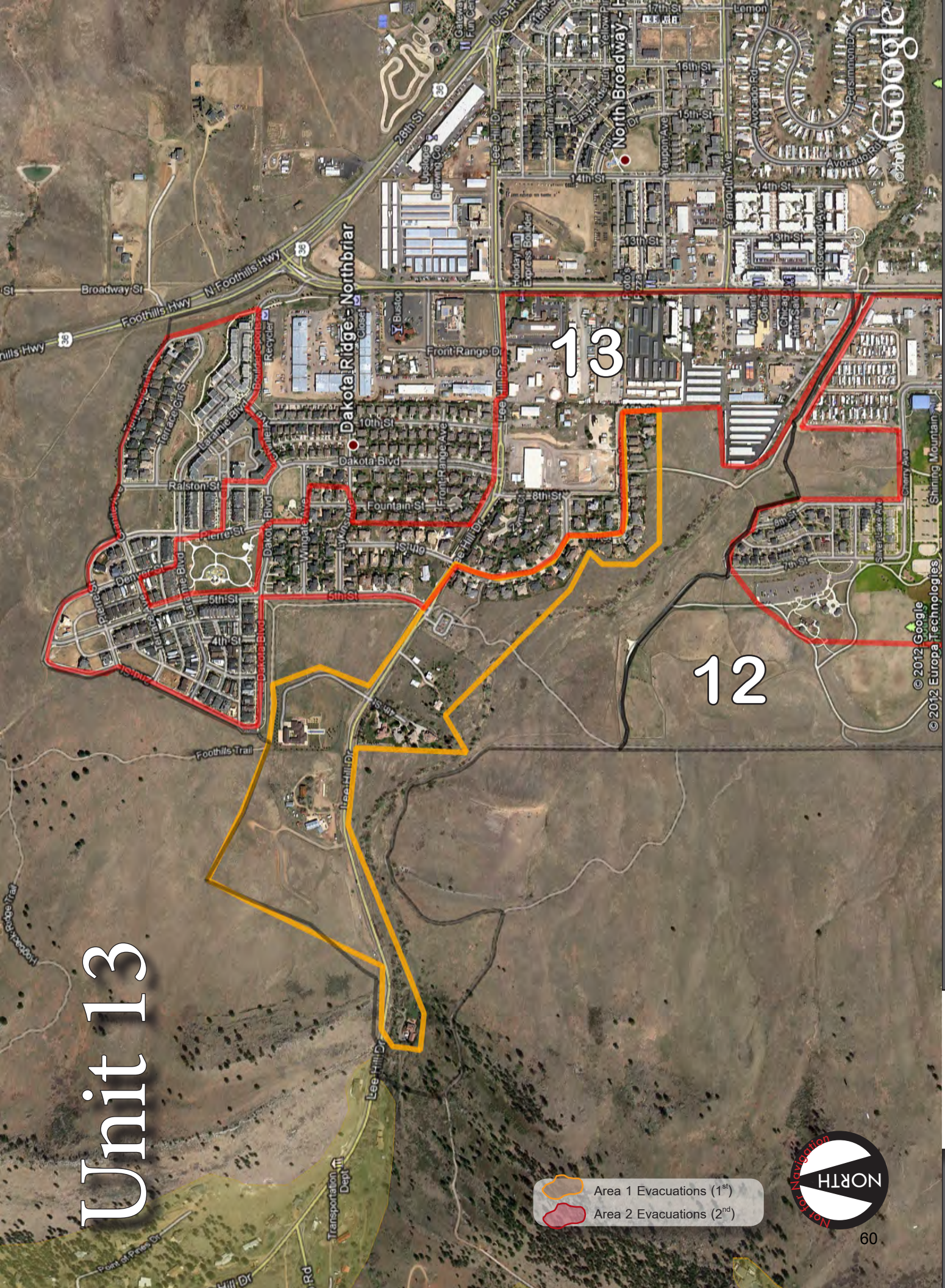




- Area 1 Evacuations (1st)
- Area 2 Evacuations (2nd)





North Evacuation Map

Unit 13



-  Area 1 Evacuations (1st)
-  Area 2 Evacuations (2nd)



-  Area 1 Evacuations (1st)
-  Area 2 Evacuations (2nd)





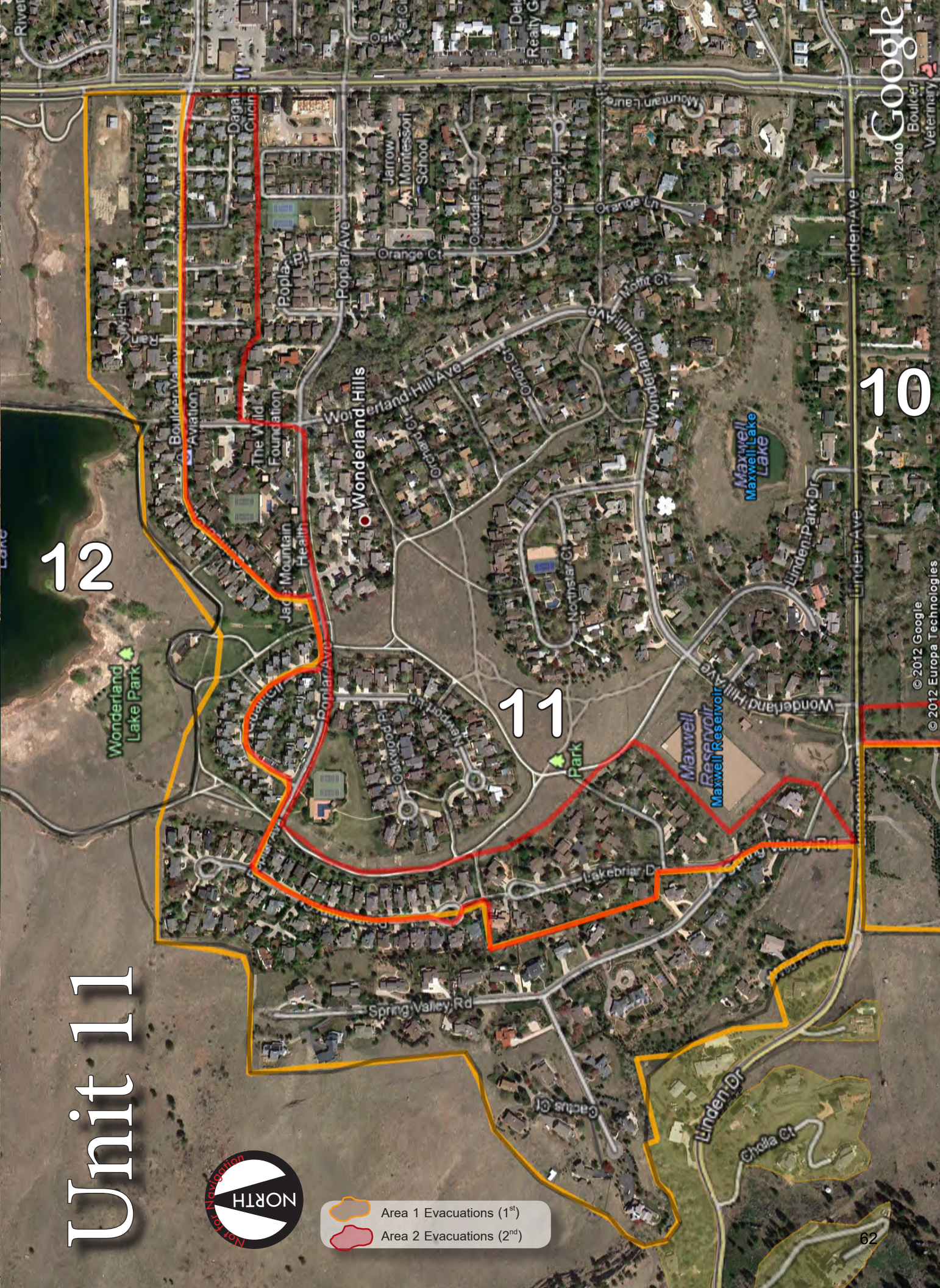
Unit 12



Unit 11



-  Area 1 Evacuations (1st)
-  Area 2 Evacuations (2nd)



10

12

11



- Area 1 Evacuations (1st)
- Area 2 Evacuations (2nd)

8



9

10

11

North Central Evacuation Map



-  Area 1 Evacuations (1st)
-  Area 2 Evacuations (2nd)

Unit 10

11

10

9

INTRODUCTION

NORTH ZONE

NORTH CENTRAL ZONE

SOUTH CENTRAL ZONE

SOUTH ZONE

APPENDIX

© 2012 Google
© 2012 Europa Technologies

© 2010 Google





10

9



8

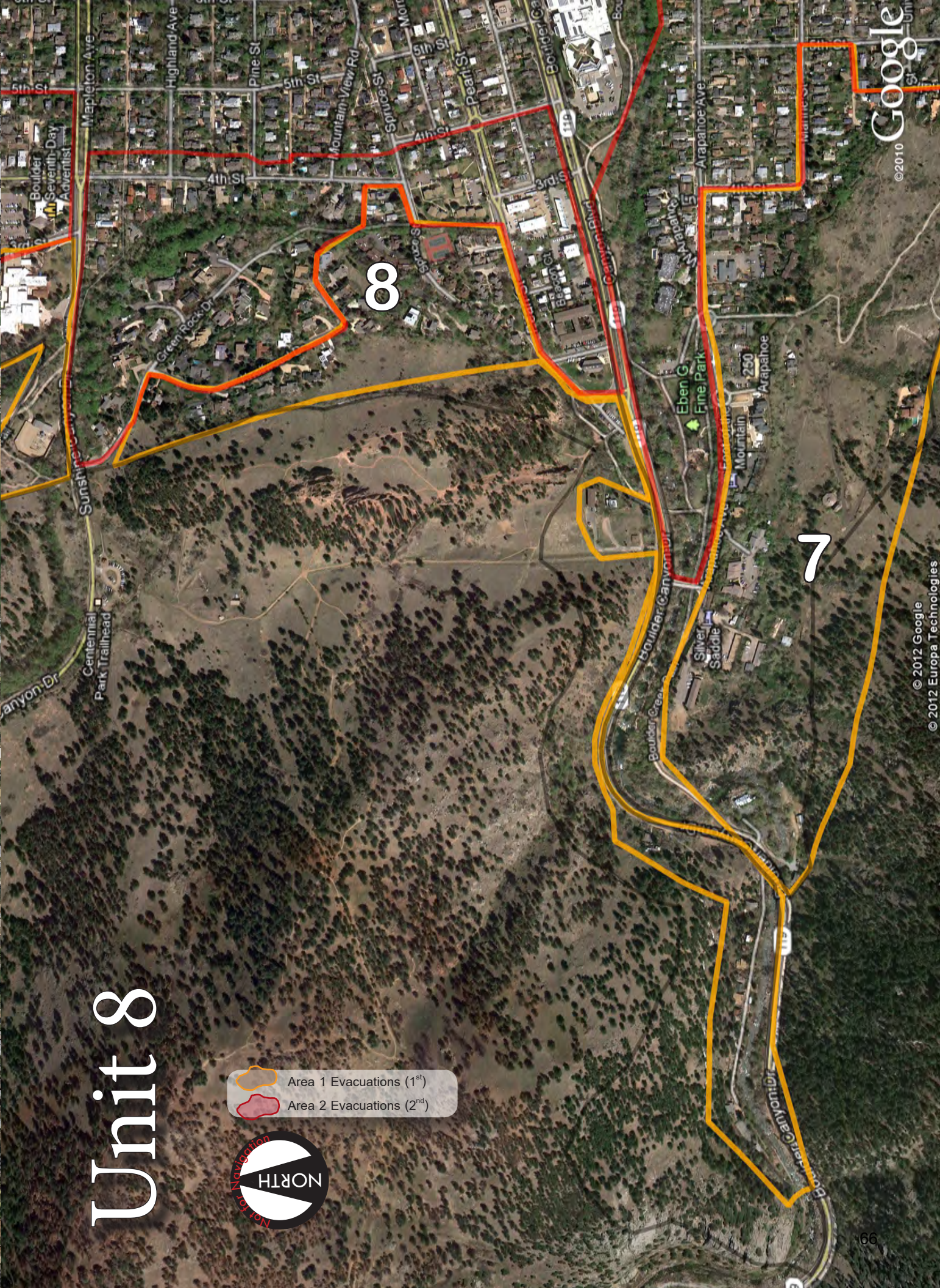
Unit 9

65

Unit 8



-  Area 1 Evacuations (1st)
-  Area 2 Evacuations (2nd)



8

7

South Central Evacuation Map

3

5

6

7

8

4



Area 1 Evacuations (1st)

Area 2 Evacuations (2nd)

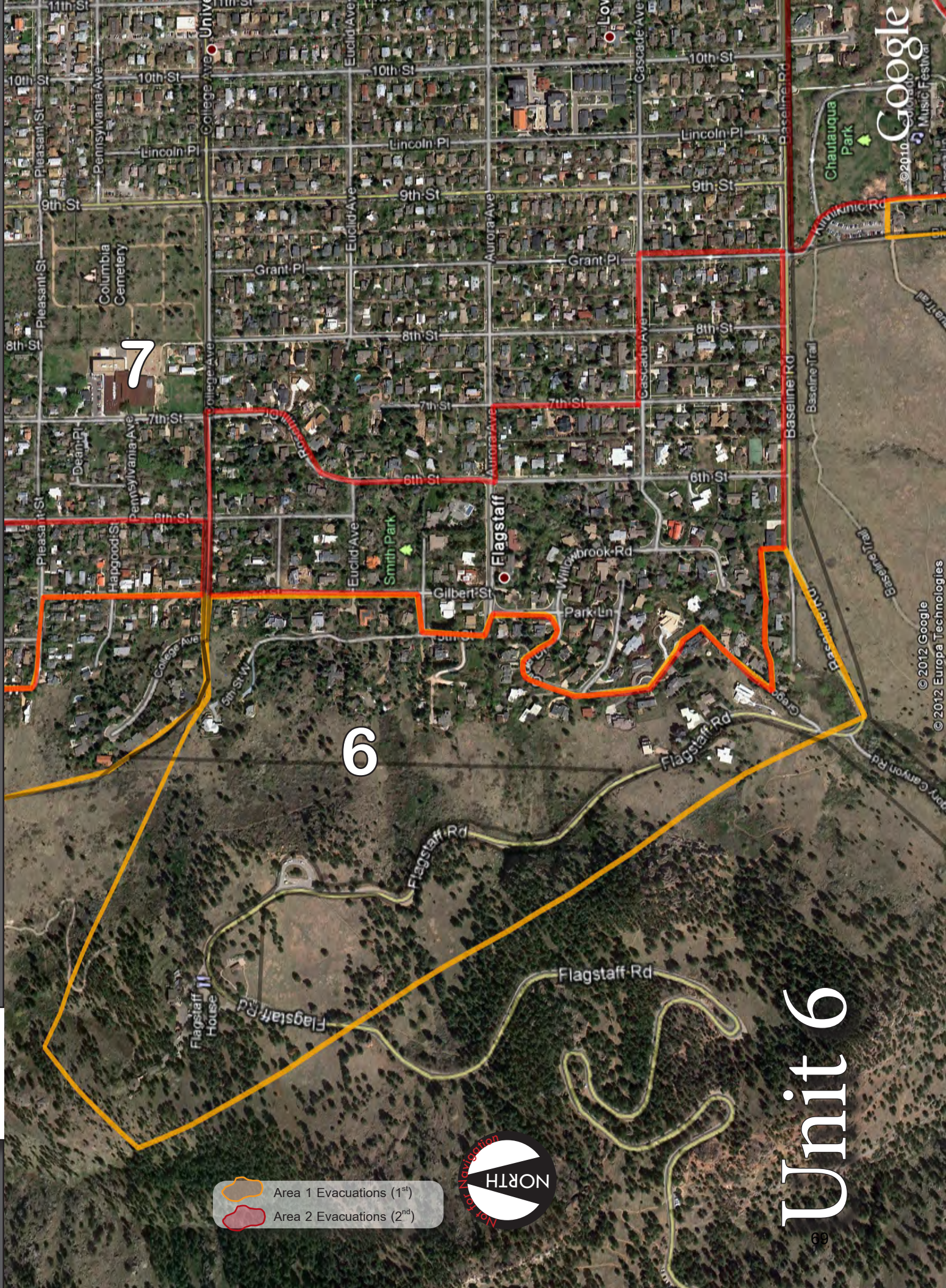



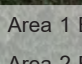
Unit 7



- Area 1 Evacuations (1st)
- Area 2 Evacuations (2nd)

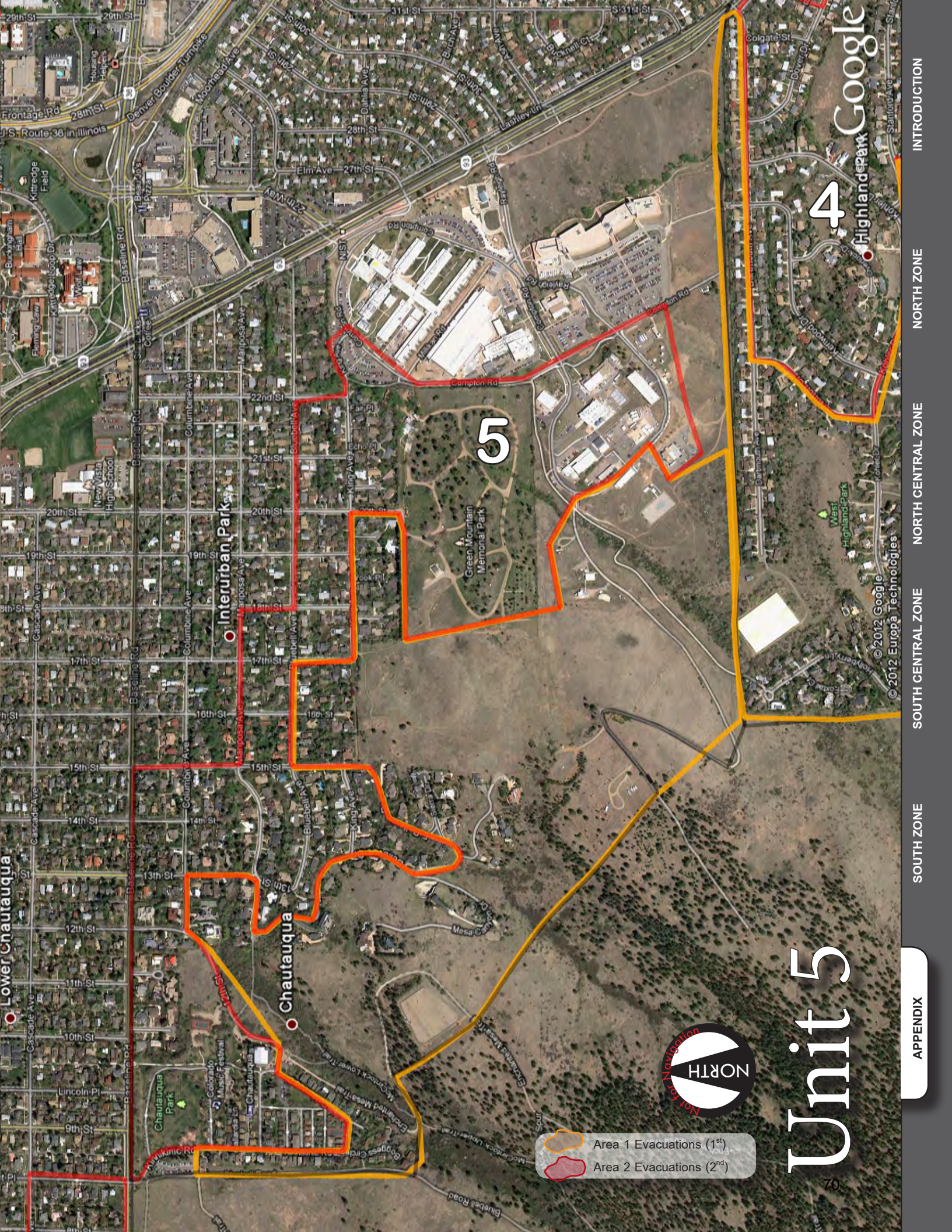




-  Area 1 Evacuations (1st)
-  Area 2 Evacuations (2nd)



Unit 6



Lower Chautauqua

Interurban Park



Chautauqua

5

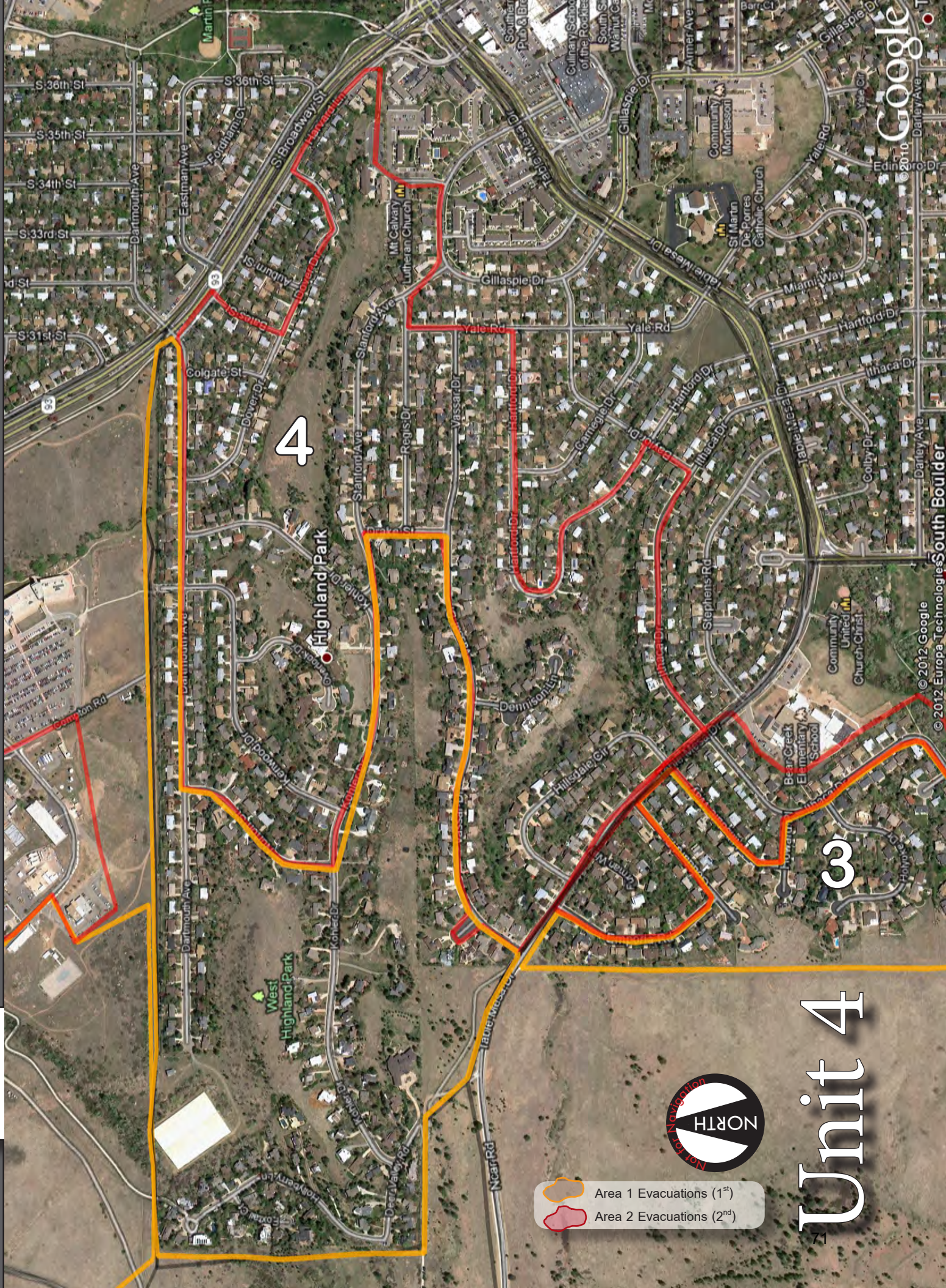
4

Highland Park Google



-  Area 1 Evacuations (1st)
-  Area 2 Evacuations (2nd)



Unit 5



4

3



-  Area 1 Evacuations (1st)
-  Area 2 Evacuations (2nd)

Unit 4




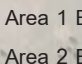
South Evacuation Map

1



2

3

4

-  Area 1 Evacuations (1st)
-  Area 2 Evacuations (2nd)

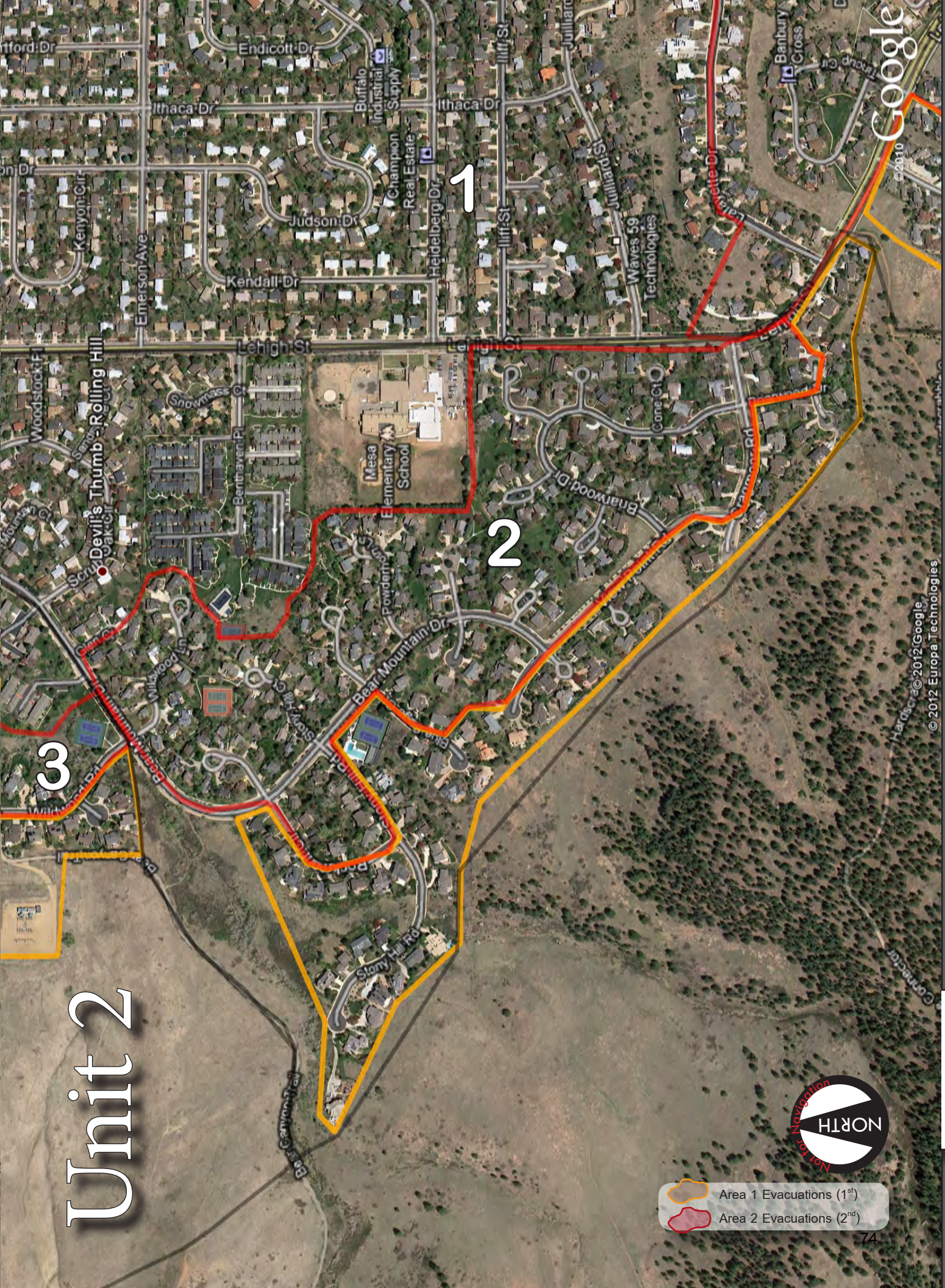


-  Area 1 Evacuations (1st)
-  Area 2 Evacuations (2nd)



Unit 3

Unit 2



- Area 1 Evacuations (1st)
- Area 2 Evacuations (2nd)



2

1

- Area 1 Evacuations (1st)
- Area 2 Evacuations (2nd)



Unit 1

