

PHONE-O-GRAM

Bill

for:

M How Diuret of 2156L

Telephoned Please return the call Will call again Came in See me

Message: Back next Friday
out of town

See attached

Phone: _____ Date 7/28 Time 8:40 By gm

Unchecked preliminary
figures on River Creek

River at Downing
860 CFS

River at Stul
1130 CFS

2	Scott	7/17
	Brian	
1,3	Bill	D
	Barb	
	File	
	Library	
	Discard	

f 43.2A



United States Department of the Interior

GEOLOGICAL SURVEY
Denver Federal Center
Denver, Colorado 80225

Water Resources Division
Colorado District

IN REPLY REFER TO:

September 18, 1975

The Urban Drainage and Flood Control District
181 East 56th Ave.
Denver, Colorado 80216

Attn: Bill DeGroot

Dear Bill:

Enclosed are copies of computations and results of indirect (slope-area) determinations of peak flows from the flood of July 14, 1975, on Niver Creek. We will forward precipitation data for this storm as soon as Northglenn area digital tapes are processed.

Feel free to call if you have any questions.

FOR THE DISTRICT CHIEF

G. L. Ducret

enclosure

RECEIVED
SEP 22 1975
U. D. & F. C. D.

NIVER CREEK AT DOWNING ST.
DISCHARGE BETWEEN SECTIONS

1	-	2
2	-	3
3	-	4
1	-	4

DELH
0.58
1.11
1.26
2.95

L
52.
88.
114.
254.

Q
693.
770.
1159.
856.

071475

Probably etc

NIVER CREEK AT DOWNING ST.

071475

PROPERTIES FOR SECTION 1						
	AREA	TOP WIDTH	WETTED PERIMETER	HYDRAULIC RADIUS	CONVEYANCE	DISCHARGE
1	1.40	4.09	4.15	0.34	29.74	1.94
2	60.82	18.70	21.11	2.88	13071.32	854.49
SUM	62.23	22.79	25.26		13101.06	856.43

ALPHA = 1.0396 FROUDE NUMBER = 1.4679 VELOCITY HEAD = 3.0579

PROPERTIES FOR SECTION 2						
	AREA	TOP WIDTH	WETTED PERIMETER	HYDRAULIC RADIUS	CONVEYANCE	DISCHARGE
1	3.68	4.25	4.53	0.81	140.38	10.61
2	54.56	17.90	20.32	2.68	11185.69	845.82
SUM	58.24	22.15	24.85		11326.07	856.43

ALPHA = 1.0983 FROUDE NUMBER = 1.5981 VELOCITY HEAD = 3.6875

PROPERTIES FOR SECTION 3						
	AREA	TOP WIDTH	WETTED PERIMETER	HYDRAULIC RADIUS	CONVEYANCE	DISCHARGE
1	2.26	3.88	4.03	0.56	67.41	5.77
2	49.85	16.84	19.36	2.57	9937.34	850.66
SUM	52.11	20.72	23.39		10004.74	856.43

ALPHA = 1.0711 FROUDE NUMBER = 1.8264 VELOCITY HEAD = 4.4927

NIVER CREEK AT DOWNING ST.

071475

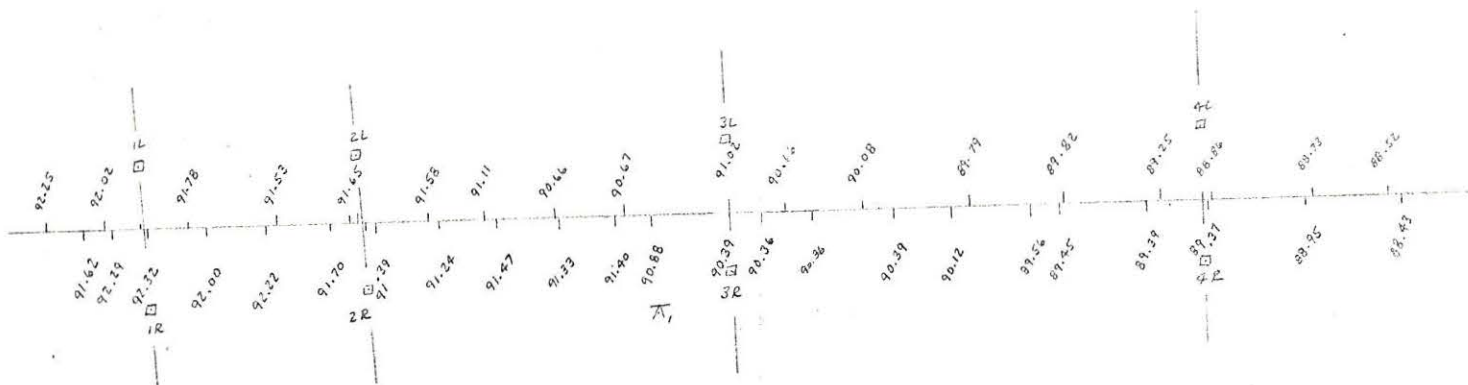
SECTION	AREA	TOP WIDTH	WETTED PERIMETER	HYDRAULIC RADIUS	CONVEYANCE	DISCHARGE
1	50.36	17.30	19.57	2.57	10036.79	839.70
2	4.68	4.37	4.84	0.97	200.04	16.74
SUM	55.04	21.67	24.41		10236.83	856.43

ALPHA = 1.1269 FROUDE NUMBER = 1.7205 VELOCITY HEAD = 4.2369

River Creek at Rowing St.

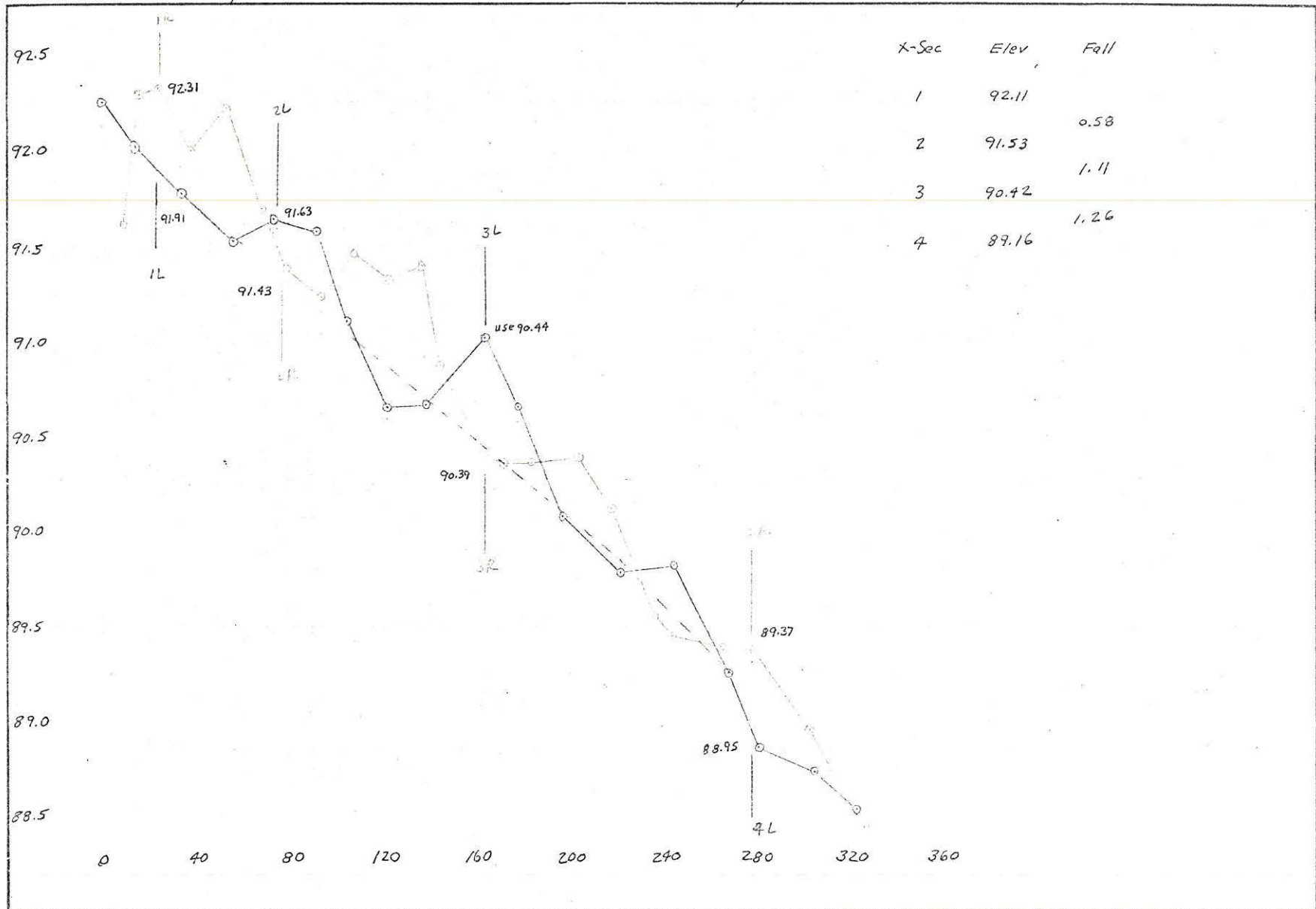
Flood of July 14, 1975

Scale: 1" = 30'



River Creek at Downing St.

Flood of July 14, 1975



Sheet No. of Sheets. Prepared by Date Checked by Date

UNITED STATES
DEPARTMENT OF THE INTERIOR
GEOLOGICAL SURVEY

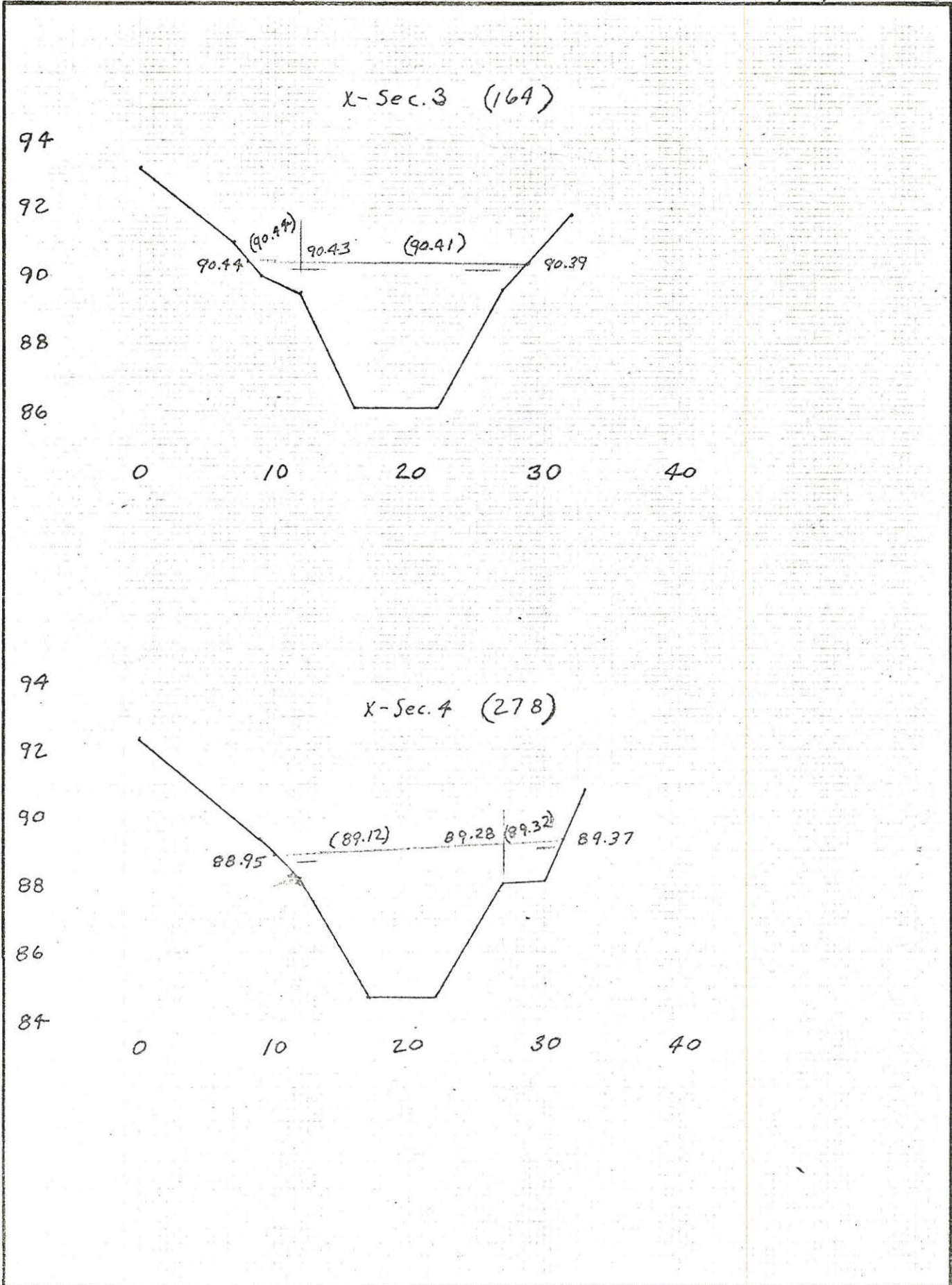
File No. { Washington
District

Niver Creek at Downing St Flood of 7/14/75

LB Profile			RB profile								
Sta	Elev	Rtg	Sta	Elev	Rtg						
0	92.25	f	9	91.62	f						
14	92.02	g	16	92.29	g						
23	□1L		24	92.32	f						
34	91.78	g	25	□1R							
56	91.53	g	38	92.00	g						
73	91.65	g	53	92.22	g						
75	□2L		68	91.70	f						
92	91.58	g	77	□2R							
105	91.11	f	79	91.39	g						
122	90.66	g	94	91.24	g						
139	90.67	g	108	91.47	f						
164	91.02	g	123	91.33	g						
164	□3L		137	91.40	f						
178	90.66	f	145	90.88	g						
197	90.08	g	164	90.39	g						
222	89.79	g	164	□3R							
245	89.82	g	172	90.36	f						
268	89.25	g	184	90.36	g						
278	□4L		204	90.39	g						
281	88.85	f	218	90.12	f						
305	88.73	f	237	89.56	g						
323	88.52	f	244	89.45	f						
			265	89.39	g						
			278	□4R							
			279	89.37	g						
			303	88.95	f						
			326	88.43	f						

Niver Crk @ Downing St

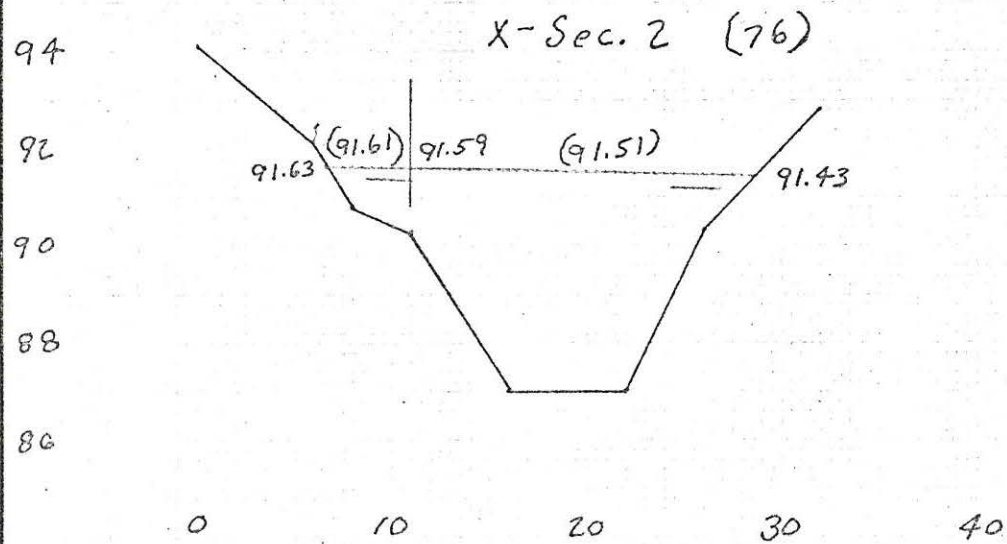
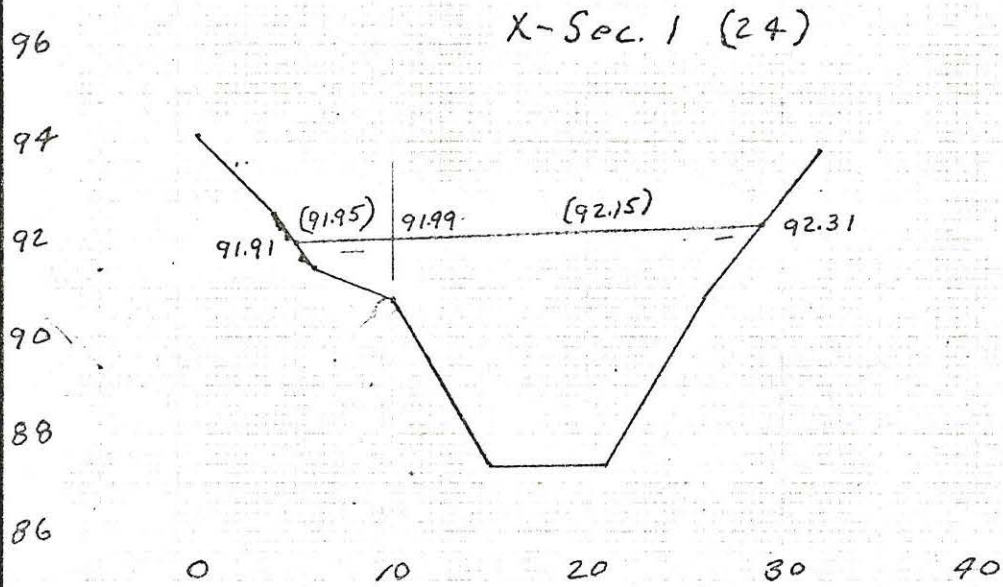
Flood of 7/14/75



GPO: 1974 - 53 - 218

Niver Crk @ Downing St.

Flood of 7/14/75



GPO: 1974-53-218

NIVER CREEK AT STEELE ST.
DISCHARGE BETWEEN SECTIONS

1 - 2
2 - 3
1 - 3

DELH
1.08
1.90
2.98

L
173.
135.
308.

071475

Q
993.
1231.
1126.

*See this
page
9/23/75*

NIVER CREEK AT STEELE ST.

071475

PROPERTIES FOR SECTION 1

	AREA	TOP WIDTH	WETTED PERIMETER	HYDRAULIC RADIUS	CONVEYANCE	DISCHARGE
1	182.56	58.06	59.44	3.07	13026.99	1126.06
SUM	182.56	58.06	59.44		13026.99	1126.06

ALPHA = 1.0000 FROUDE NUMBER = 0.6130 VELOCITY HEAD = 0.5908

PROPERTIES FOR SECTION 2

	AREA	TOP WIDTH	WETTED PERIMETER	HYDRAULIC RADIUS	CONVEYANCE	DISCHARGE
1	176.50	56.58	58.16	3.03	12494.88	1126.06
SUM	176.50	56.58	58.16		12494.88	1126.06

ALPHA = 1.0000 FROUDE NUMBER = 0.6366 VELOCITY HEAD = 0.6321

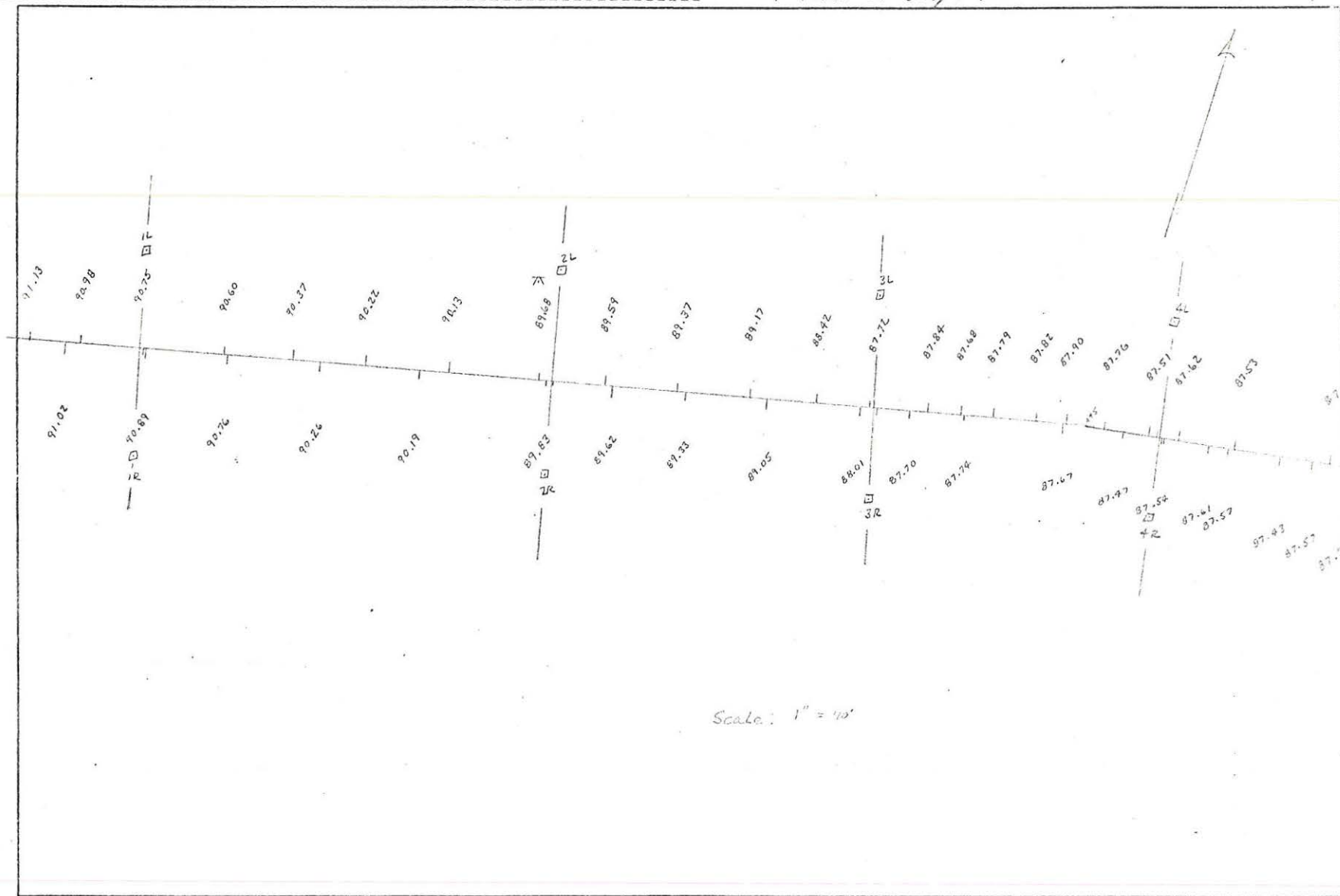
PROPERTIES FOR SECTION 3

	AREA	TOP WIDTH	WETTED PERIMETER	HYDRAULIC RADIUS	CONVEYANCE	DISCHARGE
1	150.55	52.31	53.65	2.81	10115.50	1126.06
SUM	150.55	52.31	53.65		10115.50	1126.06

ALPHA = 1.0000 FROUDE NUMBER = 0.7770 VELOCITY HEAD = 0.8687

Nine Creek at Steele St.

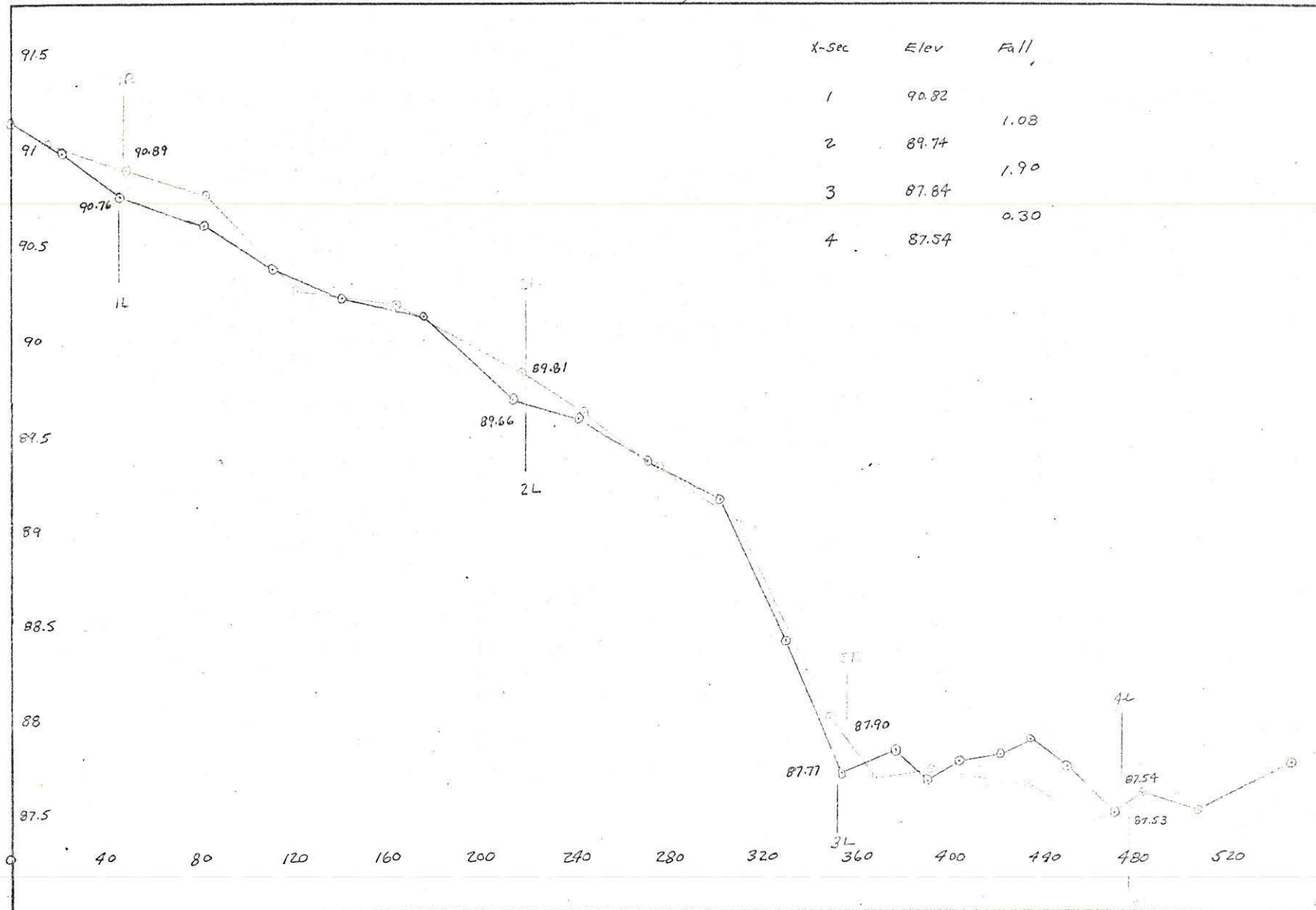
Flood of July 14, 1975



Scale: 1" = 40'

Niver Creek at Steele St

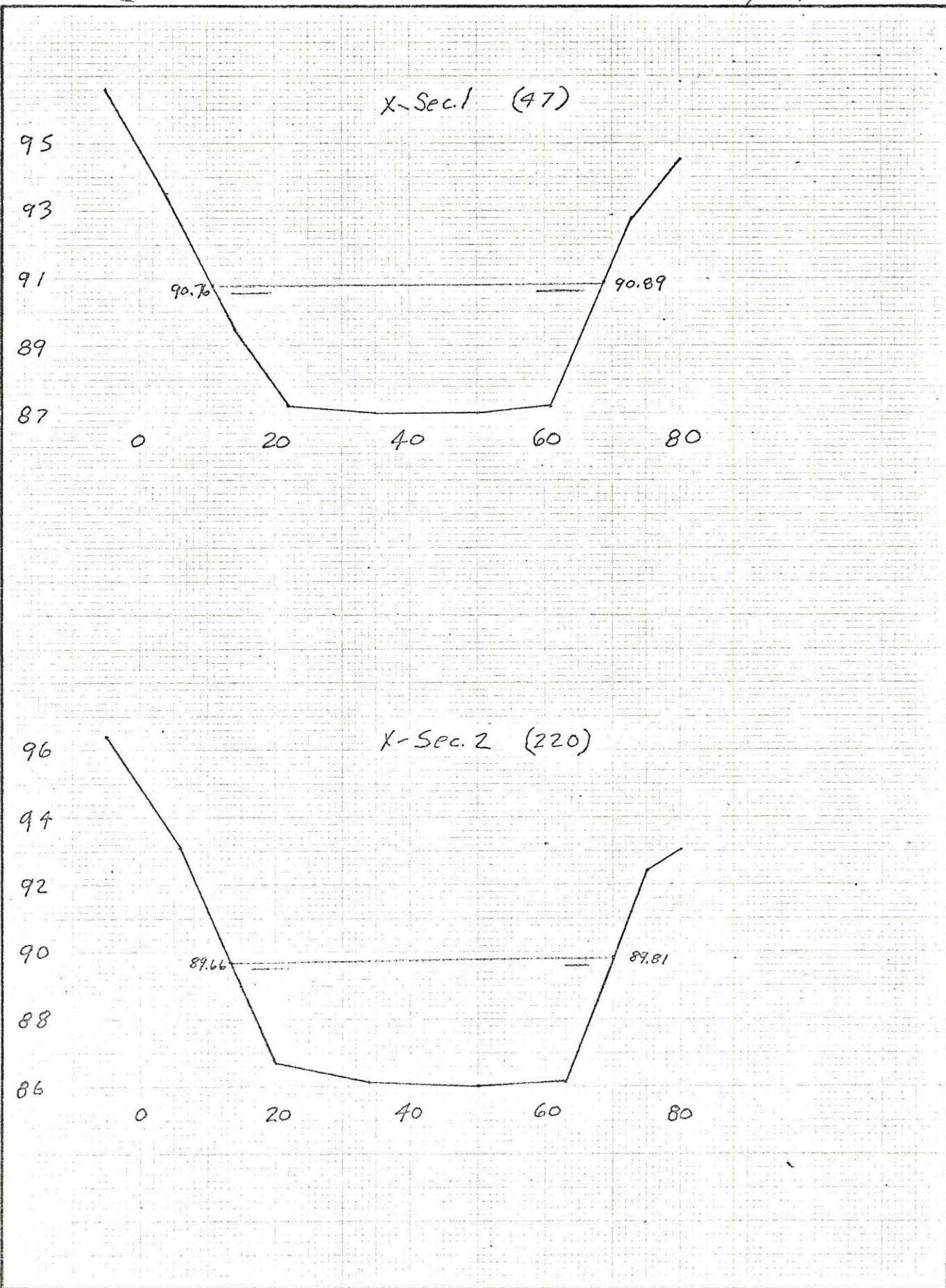
Flood of July 14, 1975



Sheet No. of Sheets. Prepared by Date Checked by *CK* Date *2/1/77*.

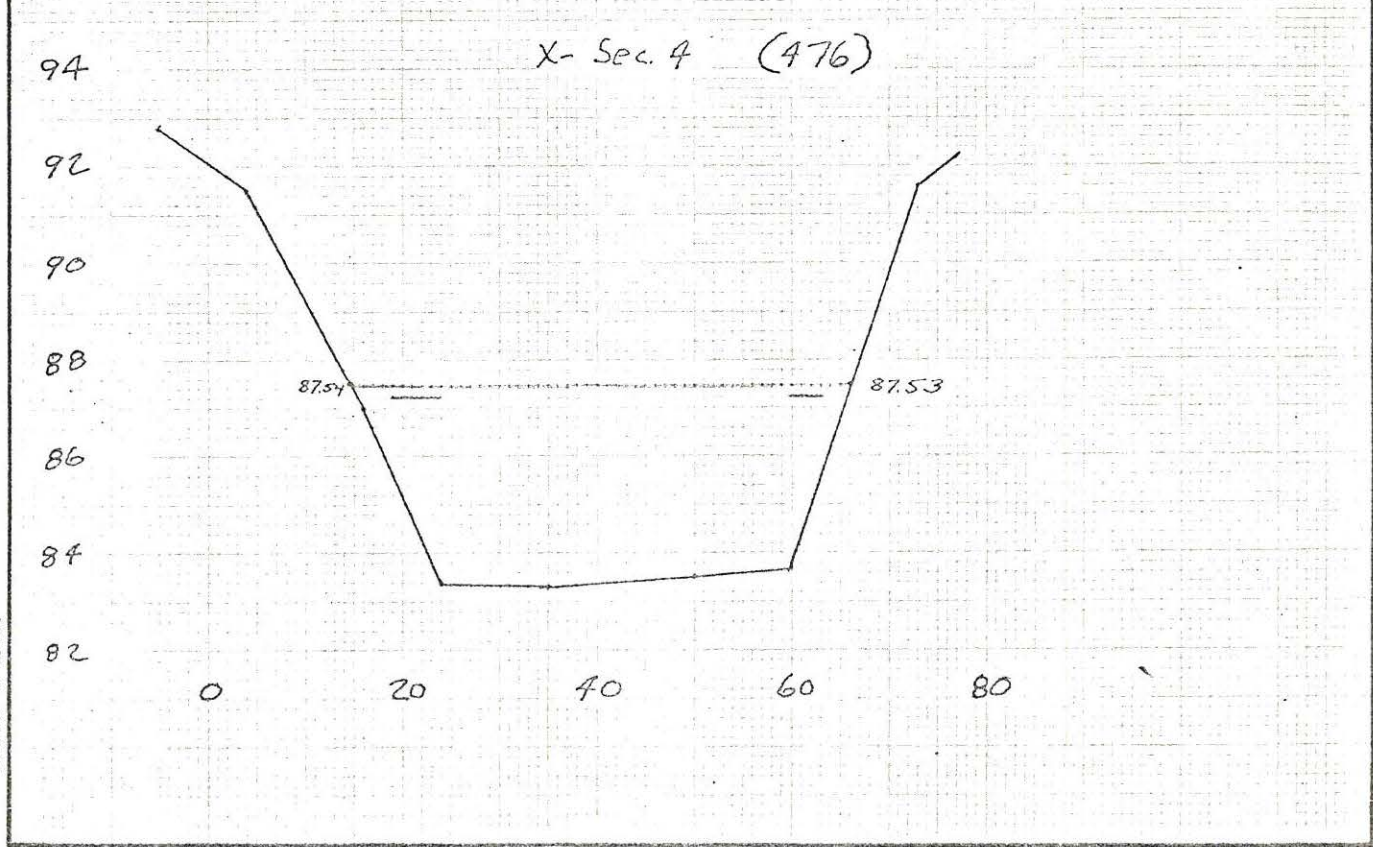
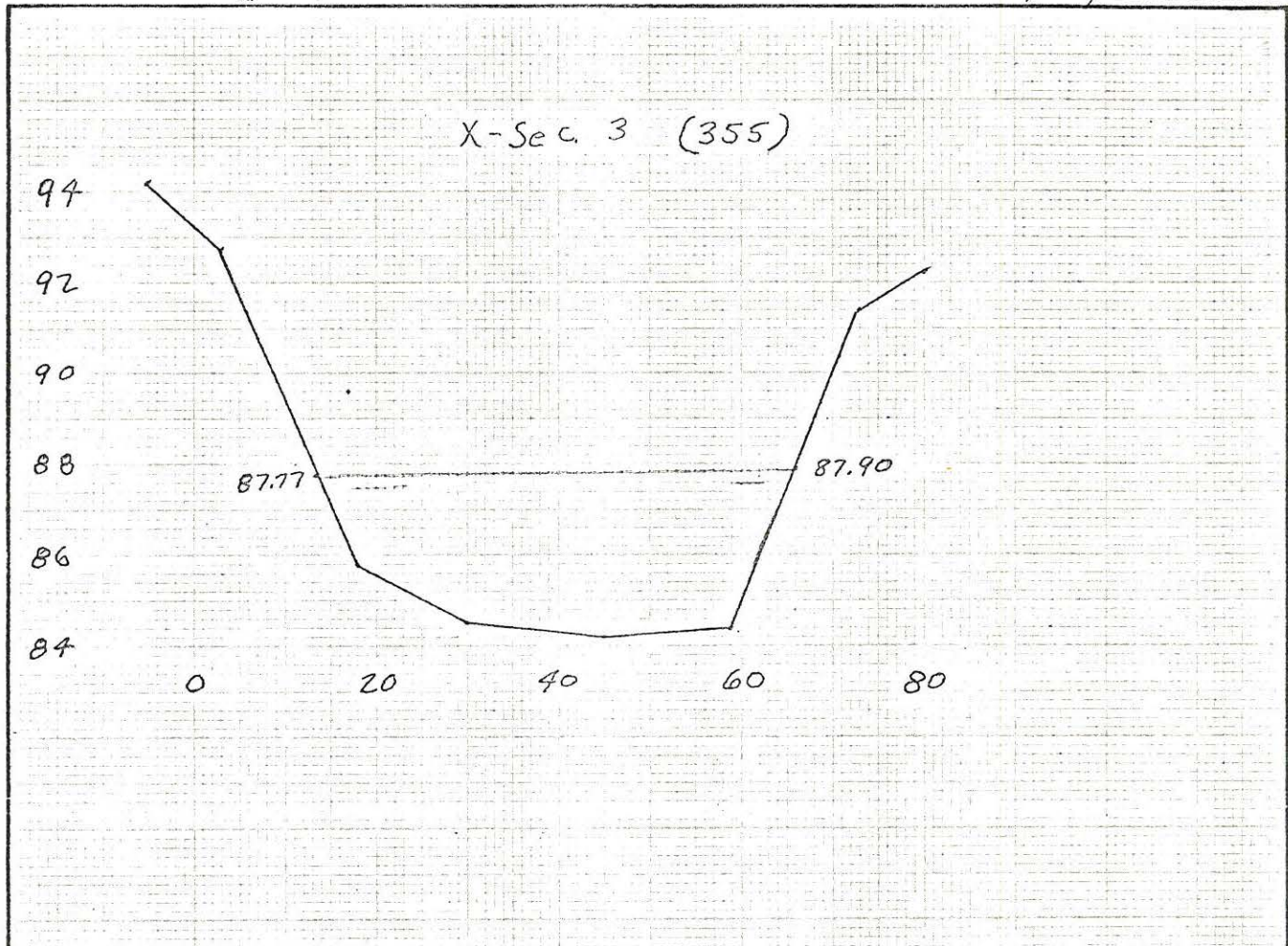
Niver Crk @ Steele St.

Flood of 7/19/75



GPO : 1955 O-334275

Niver Creek @ Steele St Flood of 7/19/75



GPO: 1955 O-334275