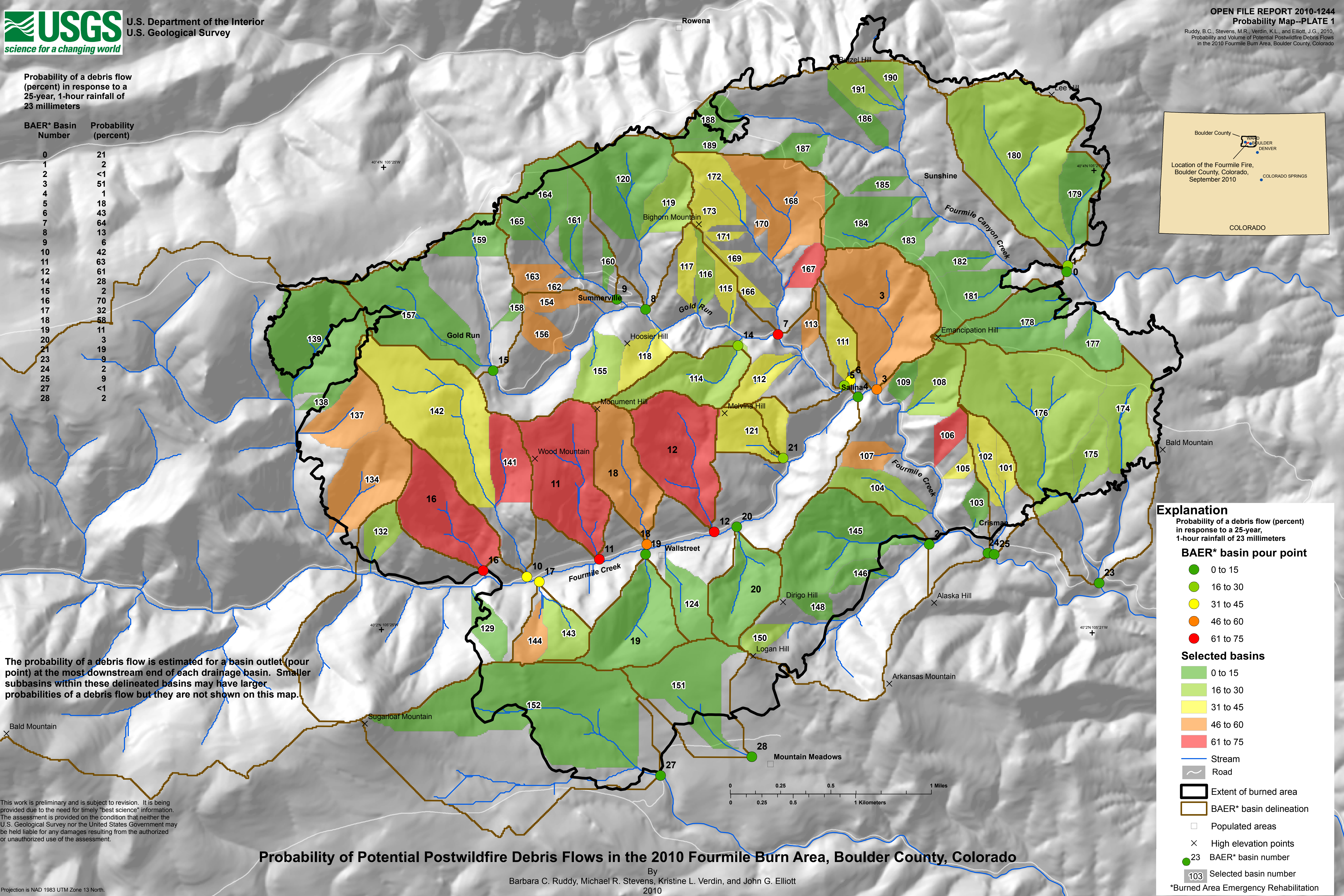
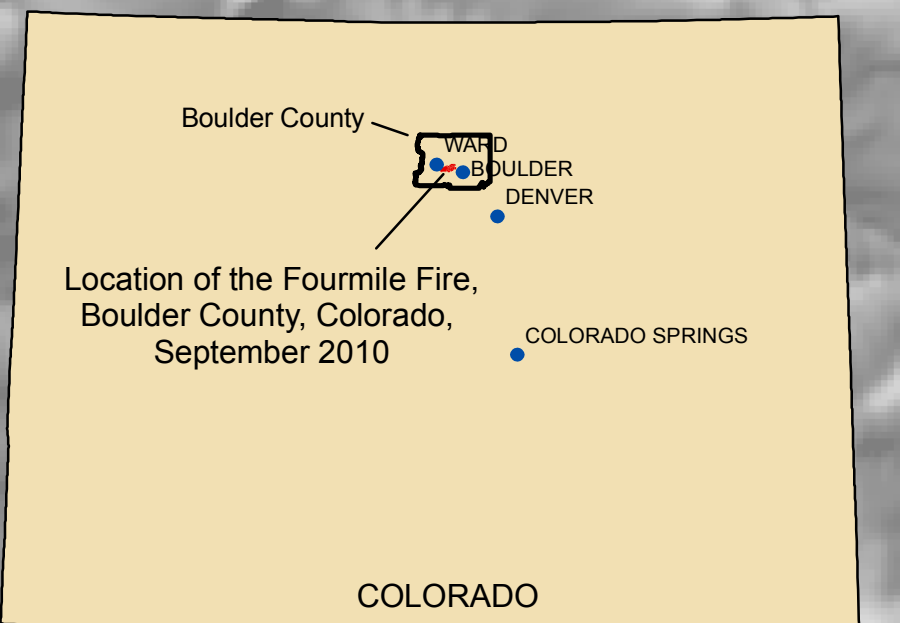


Probability of a debris flow (percent) in response to a 25-year, 1-hour rainfall of 23 millimeters

BAER* Basin Number	Probability (percent)
0	21
1	2
2	<1
3	51
4	1
5	18
6	43
7	64
8	13
9	6
10	42
11	63
12	61
14	28
15	2
16	70
17	32
18	58
19	11
20	3
21	19
23	9
24	2
25	9
27	<1
28	2



The probability of a debris flow is estimated for a basin outlet (pour point) at the most downstream end of each drainage basin. Smaller subbasins within these delineated basins may have larger probabilities of a debris flow but they are not shown on this map.

Explanation
Probability of a debris flow (percent) in response to a 25-year, 1-hour rainfall of 23 millimeters

BAER* basin pour point

- 0 to 15
- 16 to 30
- 31 to 45
- 46 to 60
- 61 to 75

Selected basins

- 0 to 15
- 16 to 30
- 31 to 45
- 46 to 60
- 61 to 75

- Stream
- Road
- ▭ Extent of burned area
- ▭ BAER* basin delineation
- Populated areas
- × High elevation points
- 23 BAER* basin number
- 103 Selected basin number

*Burned Area Emergency Rehabilitation

This work is preliminary and is subject to revision. It is being provided due to the need for timely "best science" information. The assessment is provided on the condition that neither the U.S. Geological Survey nor the United States Government may be held liable for any damages resulting from the authorized or unauthorized use of the assessment.

Probability of Potential Postwildfire Debris Flows in the 2010 Fourmile Burn Area, Boulder County, Colorado

By
Barbara C. Ruddy, Michael R. Stevens, Kristine L. Verdin, and John G. Elliott
2010

Projection is NAD 1983 UTM Zone 13 North.