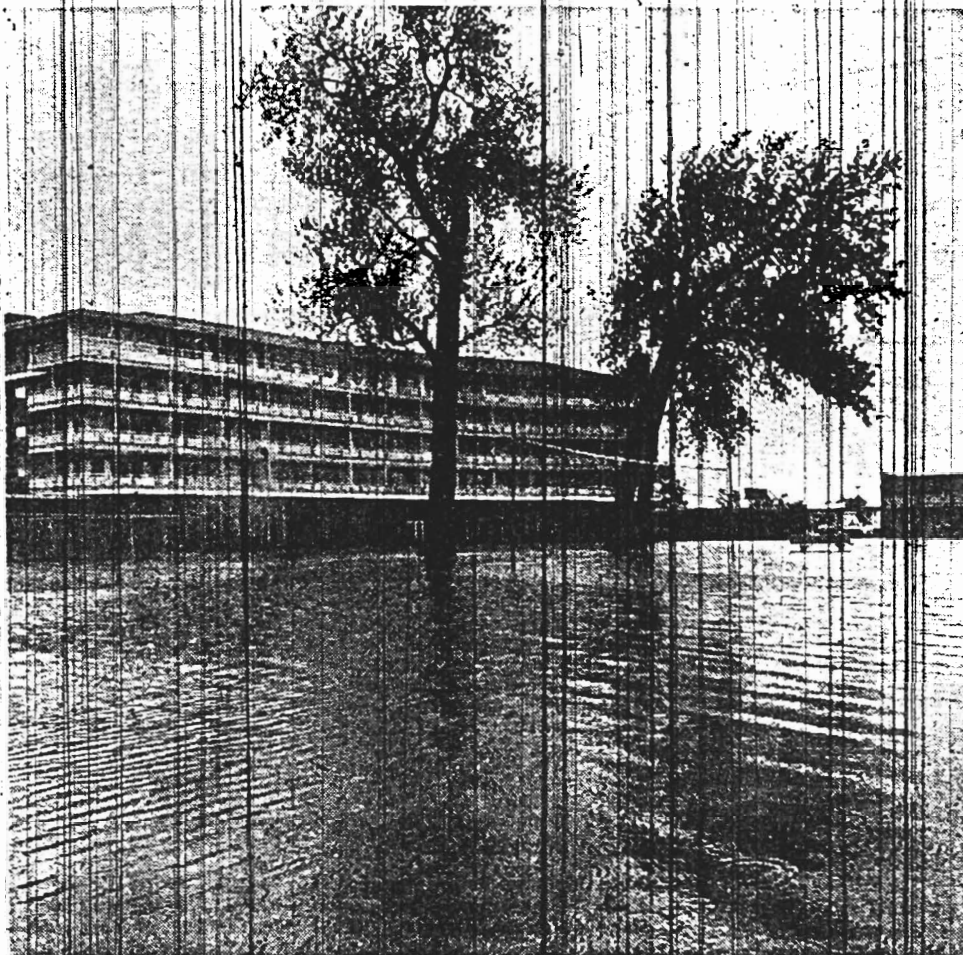


May 7, 1969

New Flooding Perils Denver, Other Areas



The Harvest House in Boulder was only one of the many places in the Denver area where water filled a good part of the scenery.

ROCKY MOUNTAIN NEWS PHOTO BY JOHN GORDON
Mud and rock slides caused by nearly three days of rain closed most of the roads near Denver leading into the snowy mountains.

By GEORGE KANE
Rocky Mountain News Writer

Continued heavy rains and snow in Colorado's isolated mountain communities Wednesday sent tributaries of the South Platte River out of their banks. One unconfirmed death was reported in Boulder County.

A flood warning was issued by the U.S. Weather Bureau Wednesday morning, and by midnight some areas of Denver, Littleton, Englewood, Sheridan, Arvada and Westminster reported farmland, residential areas, streets, highways and railyards flooded.

Boulder police reported a possible drowning at mid-afternoon, but a 40-man search team had failed to find a body by midnight. They reported a 21-year-old former University of Colorado student was seen floating in an inner tube on flooded Boulder Creek east of that city.

The inner tube was later seen passing under a bridge. Police would release no name for the possible drowning victim, saying the death was still unconfirmed.

Debris Piled Up

Nearly a dozen locations spotted over the Denver Metropolitan Area were evacuated or partially-evacuated as debris piled up against bridges and caused speeding waters to back up and overflow banks on a half-dozen creeks.

Meat packing plants and residents in the area around E. 51st Ave. and Franklin St. were reported evacuating, as were residents near W. Dartmouth Ave. and S. Gray St., S. Wadsworth Blvd. and Bowles Ave., W. Hampden Ave., low areas between S. Federal Blvd. and S. Wadsworth Blvd. and W. Colfax Ave. and 16th and W. 17th Aves. at the river.

Sixty Metropolitan State College students volunteered their help in evacuating families from some of the areas, and temporary shelters were set up in the Platte Valley Action Center, 3204 W. Colfax Ave., and Rudy Center at W. 13th Ave. and Decatur St.

Telephone service in Southwest Denver areas was reported disrupted, and power was out in a few isolated areas.

In Denver, the W. Evans Ave. Bridge over the Platte at S. Santa Fe Dr. was in danger, and highway crews expected a bridge over Bear Creek at W. Hampden Ave. and S. Knox Ct. to wash away at any time.

Navajo Freight Lines moved all of its trucks and much other equipment to high ground on Ruby Hill, overlooking the Platte, and dozens of businesses along S. Santa Fe Dr. were evacuating.

Railyards Flooded

Denver's railyards were flooded by rising waters of the Platte. The switching line around the north edge of the city was closed by wash-outs. Rock Island trains were detoured through Union Depot.

In the Colorado & Southern Railway's Seventh St. yard, workmen were building a two-foot earthen dike to hold back water from the Platte. The yard adjoins the river and suffered heavy damage in the 1965 flood.

There was no damage reported at the railyards nor at Centennial Race Track, although officials at the latter were moving records out of offices.

A tornado was reported south of Haxton, Colo., in the northeast corner of the state. Haxton is south of Julesburg. There were no reports of damage.

The mountain communities of Georgetown, Idaho Springs, Central City, Granby, Fairplay, Deckers, Jamestown and Bailey were reported totally isolated.

Public Service Co. (PSC) reported 17 inches of snow at Allenspark, and the Colorado State Patrol said 15 inches fell at Ward, west of Boulder.

The isolated communities were reported without electric power, long distance telephone communications and cut off by snow-covered and mud-slide-covered roads.

A Mountain States Telephone Co. spokesman said all crews are on the job, and said wet cables in Denver were causing widespread telephone interruptions throughout the area.

Building Collapses

Another unconfirmed report from Georgetown said the Silver Queen Theater there, one of the oldest buildings in that mountain town west of Denver, collapsed Wednesday afternoon under heavy snowfall.

A PSC spokesman reported two large power outages in Denver when water shorted out 16 transformers and a 7,520-volt power unit. The outages were from Nassau to Mansfield Aves. between Quince and Tamarac Sts., and from E.

(Concluded on page 8)

14 Arrested in Colo. Senate Demonstration

By BILL LOGAN

Rocky Mountain News Statehouse Reporter

Fourteen demonstrators — including two priests, a nun and a minister — barged into the Colorado Senate Wednesday and captured control of the presiding officer's platform for 47 minutes.

Trujillo has previously identified himself as a local director of the Communist Party.

Others of the group carried mock coffins to the Statehouse a day earlier to symbolize death of bills they sought.

The Senate was in closed-door executive session at 10:55 a.m. when the group went to a side entrance to the chamber and knocked on the door.

(Concluded on page 7)



Wiley J. Smith

Candidate Smith Opposes Any Busing

By BARBARA BROWNE
Rocky Mountain News Writer

Wiley J. Smith, Denver School Board candidate, opposes any form of busing.

"I don't say I'm against just mandatory busing," the soft-spoken 35-year-old trucking firm clerk says.

"I don't believe in busing in any way. I don't believe it would improve racial relations at all.

"I do know it would be an added cost when already there seems to be a drain on the taxpayers."

In place of busing, Smith calls for:

- A uniform educational program with the same standards throughout the city.

- Improvement of substandard schools "where ever they may be found."

Smith says he favors "open enrollment" with children able to attend any school they wish in any part of Denver.

"However, the expense of transportation would be at the families' expense, not at the school system," he said.

'Should Be No Reason'

"But if we have a uniform program of education, there should be no reason for busing or for unrest in the various parts of the city."

Smith also doesn't believe "all the substandard schools are in northeast Denver.

"For instance," he said, "Cheltenham School at W. Colfax Ave. and Perry St. is just so very, very old. It looks as though it's going to collapse at any moment."

New Flooding Perils Metro Area

(Continued from page 5)
37th to 40th Aves. between Columbine and Downing Sts. Power was restored after several hours.

There were numerous other minor outages reported from water-caused malfunctions and water seeping into underground distribution systems.

Police reported a trailer court at S. Santa Fe Dr. and Bowles Ave. was being evacuated because of overflow from the South Platte, and rushing waters from Bear Creek tore away some 35 feet of earth around the Kon Tiki mobile home park at 3500 S. King St. in Englewood.

Families Evacuated

Littleton police reported the evacuation of some families, trailer homes and small businesses along the Old Mill Road west of Santa Fe Dr. at the Bowles Ave. bridge because of high water. There was no general evacuation of the area, they reported.

Some residents were evacuated from Tinytown, a village west of Denver.

Police said flood waters by late Wednesday

had not reached the proportions of the 1965 flood on the Platte, but were concerned over continued heavy rain reported in the mountains and coming down both Bear and Turkey Creeks.

They said the water seemed to be receding along those creeks by midnight, but reported the Platte River still rising slightly.

The Weather Bureau hopefully predicted that rains would diminish overnight and end by early Thursday afternoon.

The Denver Civil Defense Department warned that anyone living within the vicinity of the South Platte from Englewood south should "be notified to be on the alert."

50-Mile Flood Area

Some flooding was reported along a 50-mile line from Conifer southwest of Denver to Longmont, nearly 35 miles north of Denver. Many basements were reported flooded.

Along Bear Creek, a greenhouse was crumpled and washed away in the vicinity of W. Dartmouth Ave. and S. Webster St. as waters widened the creek at that point.

A portion of W. Dartmouth Ave. south of

Kennedy High School was washed away by Bear Creek and Department of Public Works crews were trying to shore up the rest of the street. The street was closed and police stationed cars there to keep sightseers away.

Most schools in Boulder County were closed and eight were shut down in Jefferson County. Reported closed in Jefferson were Wilnot, Evergreen Junior and Senior High, Parmalee Elementary, West Jefferson Elementary and Junior High, Ralston Elementary, Red Rocks Elementary and Coal Creek Elementary.

Most highways west of Denver were closed by snow or mud and rock slides, making it impossible for telephone and Public Service Co. crews to get to the areas to restore service.

At 5 p.m. Wednesday, Denver police stationed along the Platte River reported the river has risen a foot between 3 and 5 p.m., causing serious concern among city officials.

'Key to Situation'

Police Chief George Seaton, on the job since midnight Tuesday, said the "key to the situation" is keeping the debris away from the bridges.

Cranes were working at virtually every bridge along the South Platte throughout the day Wednesday to pluck debris from the swift water.

Dozens of streets in the Denver area were closed by high water, and officials in Adams and Arapahoe Counties and in Arvada reported Sand, Plum and Ralston Creeks all rising, but still within their banks.

The Valley Highway north from downtown Denver was closed to traffic about 4 p.m. and many of the southbound entrances were reported flooded and closed.

Between Sunday afternoon and noon Wednesday, Denver had received an official 2.52 inches of rainfall, the Weather Bureau said, but some rain gauges around the city measured in excess of 5 inches. Boulder, as of noon Wednesday, had received 5.3 inches.

Heavy Snows Fall

While the lower elevations received incessant rains for the fourth straight day, heavy snows fell in the mountains.

Heavy snowpack closed Loveland Pass and Berthoud Pass was closed because of a snow slide. Snowplows were being used to keep as many roads open as possible.

Highways closed during the morning because of flooding were mostly in Boulder County, but others in Denver and south were being blocked throughout the afternoon.

One bridge was closed at E. 96th Ave. and Dahlia St. in Adams County because of high water, and 83 persons were reported stranded for a time in Pinewood Springs west of Lyons, from flooding.

**Publisher Ties
Campus Turmoil**