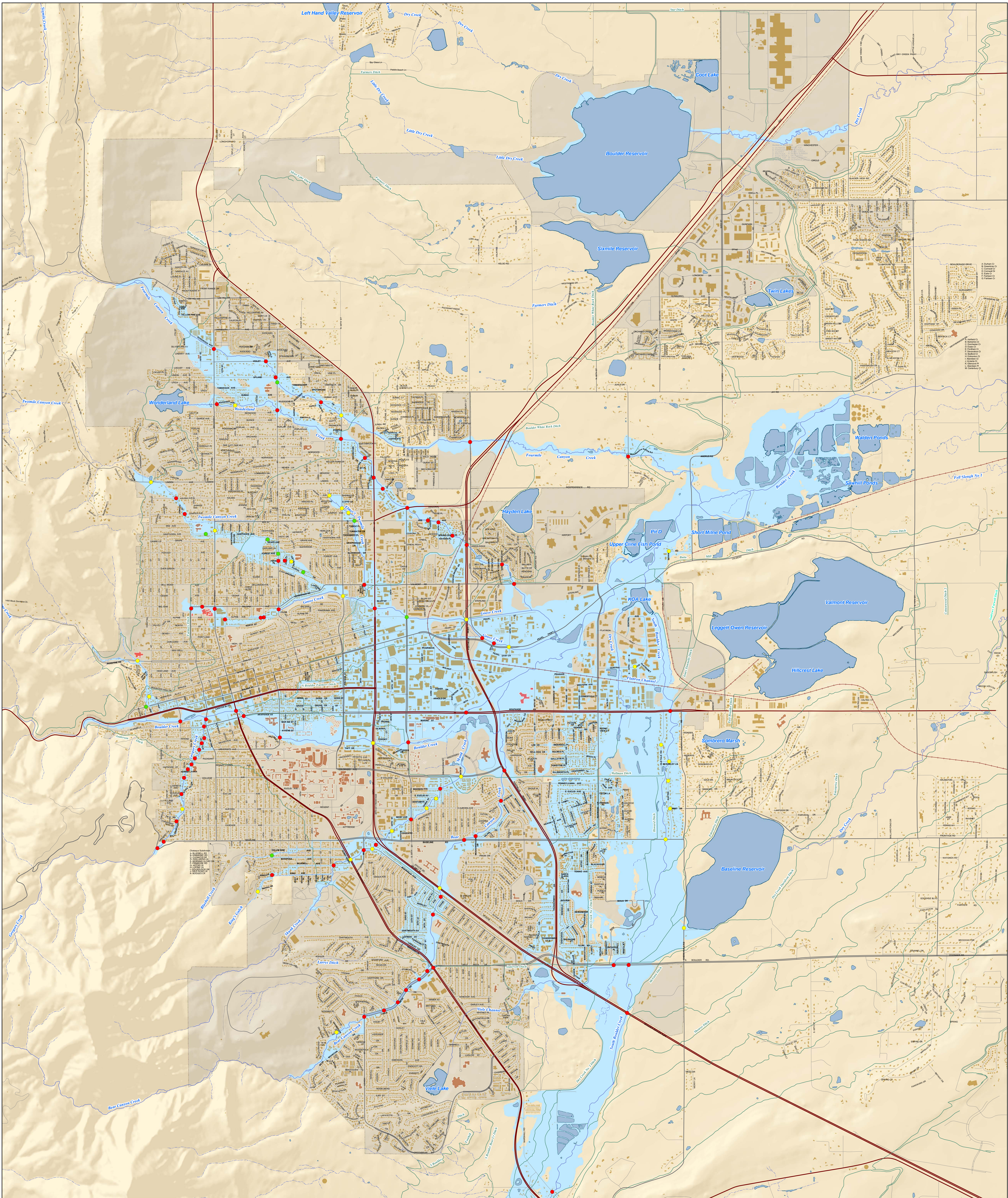


# Estimated Flood Depths at Street Intersections During a 500 Year Flood Event

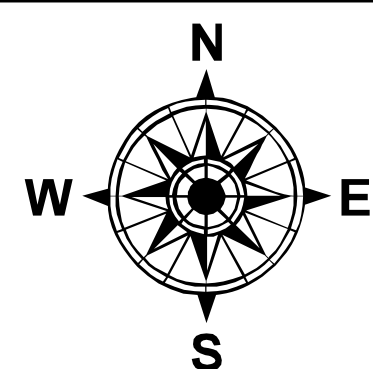


## Legend

- |                     |                    |             |
|---------------------|--------------------|-------------|
| 500 Year Floodplain | Intermittent Creek | School      |
| <6" of water        | Ditch              | City Limits |
| 6-18" of water      | Lake               |             |
| >18" of water       | Hospital           |             |
| Creek               | Building           |             |

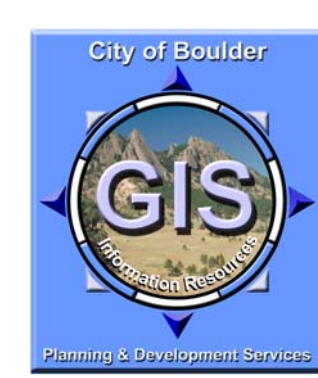
Floodplain maps are periodically updated and revised to reflect changing conditions, such as new topography, land development, updated mapping studies, impacts of flooding, and construction of floodplain improvements.

Please visit [BoulderFloodInfo.net](http://BoulderFloodInfo.net) for more information.  
Map printed April 14, 2009



0 2,000 4,000 6,000 Feet

1:14,400



© 2009 City of Boulder, Colorado  
All rights reserved. The map information contained herein is intended for the sole use of the purchaser and may not be copied, displayed or redistributed in any way, in whole or in part, without the expressed written consent of the City of Boulder.  
The information developed or provided as a graphical representation only. While source documents were developed in compliance with National Map Accuracy Standards, the City of Boulder provides no guarantee, express or implied, as to the accuracy and/or completeness of the information contained herein.  
Map produced by the City of Boulder Planning and Development Services Information Resources Group.  
For information call (303)441-3131 or visit us on the web at <http://www.ci.boulder.co.us/planning/>.

SUBJECT TO REVISION