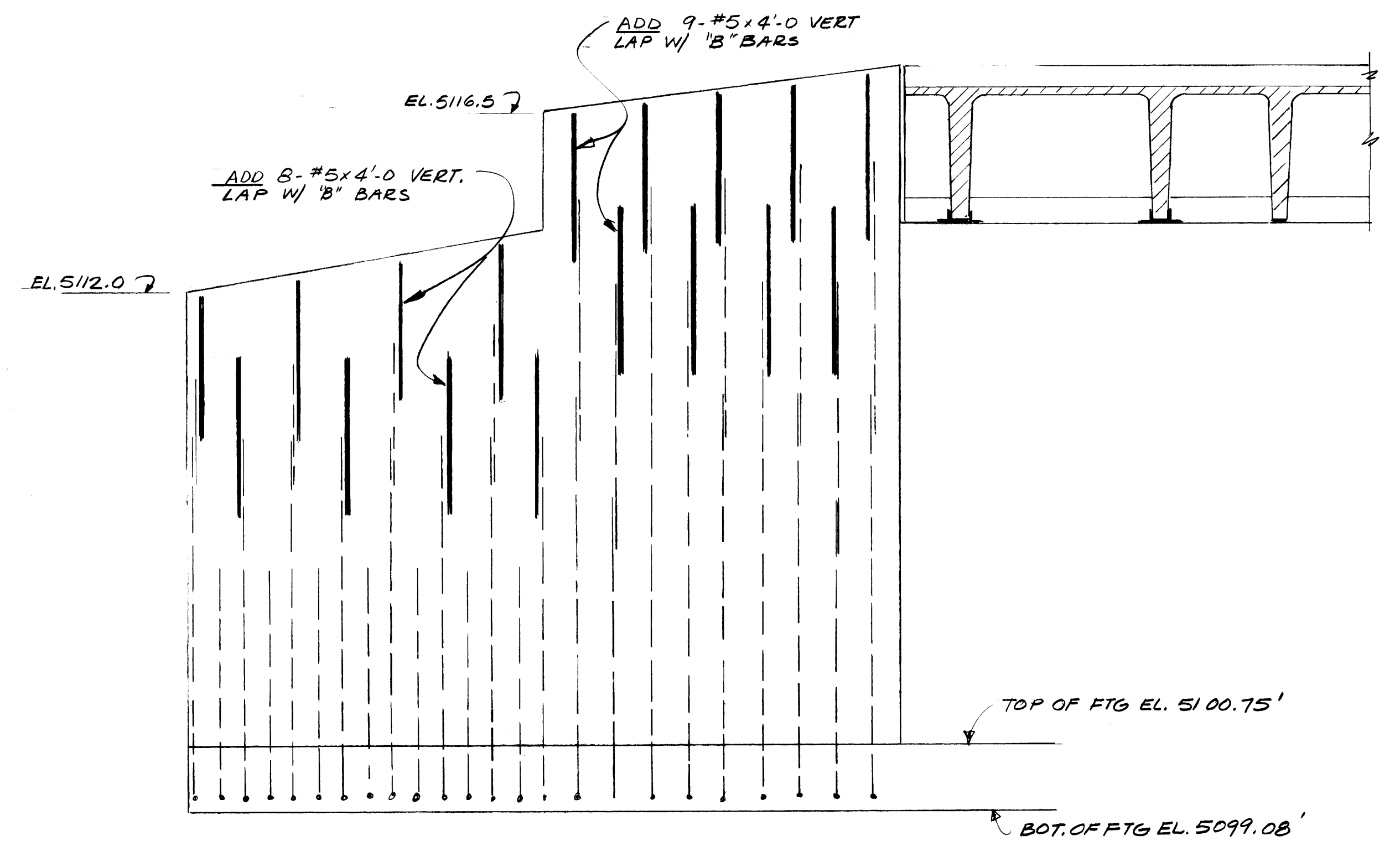


REVISED SECTION  
SOUTH ABUTMENT C  
67  
3/8" = 1'-0"

REVISION OF SECTION C  
67 OF CONTRACT DOCUMENTS  
DATED OCT. 1977

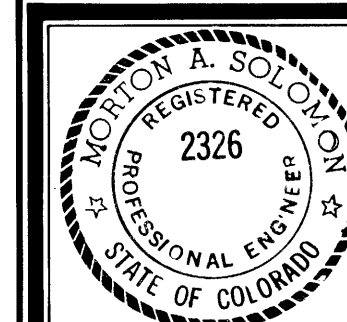
1. CHANGE OF TOP & BOTTOM FOOTING ELEVATION
2. THIS DRAWING TO BE USED ONLY FOR THE ADDITIONAL REINFORCING STEEL REQUIRED DUE TO THE CHANGE IN HEIGHT OF THE ABUTMENT WALL.
3. NOTE WELL! WALL THICKNESS OF ABUTMENT WALL TO BE 2'-4"
4. CONTRACT DOCUMENT SPECIFICATIONS, DATED OCT, 1977, APPLY TO THIS REVISION



REVISION OF SECTION 1  
68 OF CONTRACT DOCUMENTS, DATED OCT. 1977

1. CHANGE OF TOP & BOTTOM FOOTING ELEVATION
2. THIS DRAWING TO BE USED ONLY FOR THE ADDITIONAL REINFORCING STEEL REQUIRED DUE TO CHANGE IN HEIGHT OF THE WING WALL. REINF. TO BE ADDED NOTED THUS
3. ADD HOR. REINF. AS REQUIRED BY SHEET 10 OF CONTRACT DOCUMENTS.

REVISED SECTION -  
EAST WING WALL - SOUTH ABUTMENT 1  
68  
3/8" = 1'-0"



75th STREET BRIDGE	
BOULDER, COLORADO URBAN DRAINAGE AND FLOOD CONTROL DISTRICT	
REVISION OF SOUTH ABUTMENT AND ITS EAST WING WALL	
PROJECT NO. 772-74.1	WRIGHT-MCLAUGHLIN ENGINEERS 2420 ALCOTT ST. DENVER, COLO. 80211
DESIGN PB	DATE MARCH 22, 1978
DETAIL PB	DRAWING NO. R-1
CHECK PB	