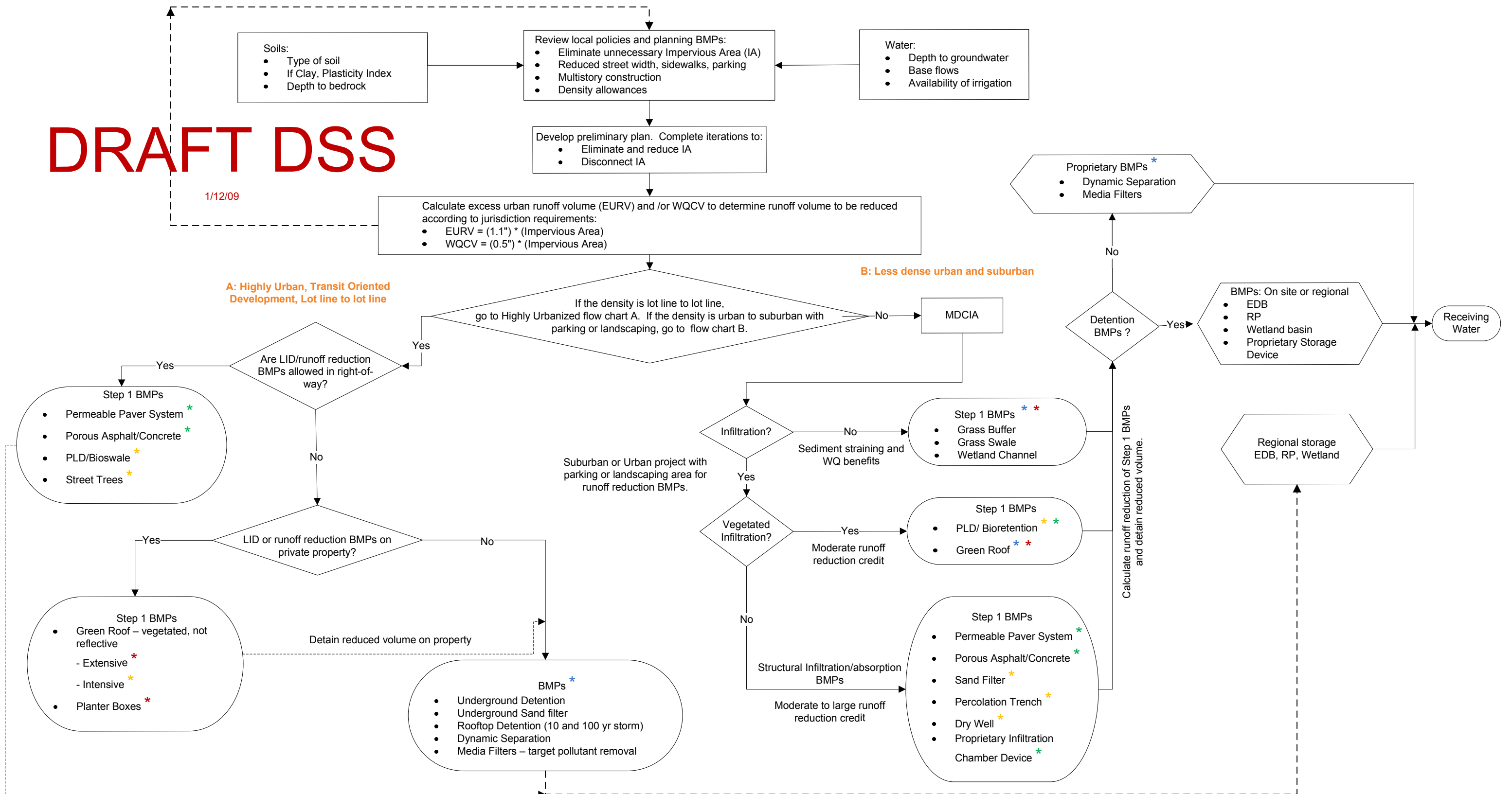


DRAFT DSS

1/12/09



Runoff Reduction Credit Guide: qualitative guide for detention reduction credit when a runoff (volume) reduction BMP is used.

- * Denotes BMP with Maximum detention credit potential: provides WQCV and benefits for minor and benefits for major event
- * Denotes BMP with Moderate detention credit potential: provides WQCV (or portion of WQCV) and benefits for minor event
- * Denotes BMP with Minimal detention credit potential: Portion of WQCV
- * Denotes BMPs with water quality improvement only: No storage or detention volume benefits

Notes:

- Even if runoff will flow to a regional basin, the site must use source volume controls to reduce wear on the conveyance system and volume flow to the regional structure.
- Need to provide preference hierarchy: surface controls before sub surface controls or proprietary controls.
- There are multiple endpoints and treatment trains that can be applied to site or parts of site. For example, part of site may include swales flowing to a PLD and another portion of site may have permeable pavers flowing subsurface to a PLD.
- May separate Planning (top section), A process, B Process on different pages.

