

APPENDIX



Name	ID	Sensor Type	Date Installed	Latitude	Longitude	Elevation	Gage Height	Anemometer Height	Temperature Sensor Height	Ground type
Car Street	100	P, S	5/30/88	39:48:17 N	-105:05:27 W	5322'	9'2"	N/A	N/A	Grass

Comments: Gage obstruction due to tree to the southeast.



Name	ID	Sensor Type	Date Installed	Latitude	Longitude	Elevation	Gage Height	Anemometer Height	Temperature Sensor Height	Ground type
Ralston Reservoir	110	P, S	9/23/88	39:49:22 N	-105:14:46 W	6033'	9'2"	N/A	N/A	Scrub grass

Comments: Gage located about 25 feet from reservoir. Locked gate. Need permission from Denver water to access.



Name	ID	Sensor Type	Date Installed	Latitude	Longitude	Elevation	Gage Height	Anemometer Height	Temperature Sensor Height	Ground type
West Woods	120	P, S	8/21/89	39:49:12 N	-105:10:24 W	5590'	9'5"	N/A	N/A	Scrub grass

Comments: Locked gate. Gage located about 4' from gate. West Woods golf course.



Name	ID	Sensor Type	Date Installed	Latitude	Longitude	Elevation	Gage Height	Anemometer Height	Temperature Sensor Height	Ground type
Blue Mountain	140	Wx/R	04/25/91	39:52:12N	105:17:48W	8050'	9'11"	11'3"	10'4"	Scrub grass

Comments: Pine trees ~20' to the southwest, and west. Moisture sensor ~25 to West, 2.5' off the ground



Name	ID	Sensor Type	Date Installed	Latitude	Longitude	Elevation	Gage Height	Anemometer Height	Temperature Sensor Height	Ground type
Knott Creek	150	P	04/09/91	39:51:08 N	105:21:58 W	7815'	9'4"	N/A	N/A	Scrub grass

Comments: Locked gate at trailhead. Located about 0.50 miles above trailhead.



Name	ID	Sensor Type	Date Installed	Latitude	Longitude	Elevation	Gage Height	Anemometer Height	Temperature Sensor Height	Ground type
Leyden Reservoir	200	P, S	05/30/88	39:50:24 N	105:10:02 W	5603'	9'8"	N/A	N/A	Scrub grass

Comments: Gage located on a 45-degree incline. Locked gate on access road.



Name	ID	Sensor Type	Date Installed	Latitude	Longitude	Elevation	Gage Height	Anemometer Height	Temperature Sensor Height	Ground type
Leyden Confluence	210	P, S	08/02/89	39:49:21 N	105:07:22 W	5430'	9'8"	N/A	N/A	Grass

Comments: Two story house ~35' to the west.



Name	ID	Sensor Type	Date Installed	Latitude	Longitude	Elevation	Gage Height	Anemometer Height	Temperature Sensor Height	Ground type
Upper Leyden	220	P	08/14/90	39:50:40 N	105:14:02 W	6000'	9'6"	N/A	N/A	Scrub grass

Comments: Gage visible from Hwy. 93. Pond ~ 10' to west.



Name	ID	Sensor Type	Date Installed	Latitude	Longitude	Elevation	Gage Height	Anemometer Height	Temperature Sensor Height	Ground type
Van Bibber Park	300	P	09/23/88	39:47:41 N	105:08:47 W	5525'	8'9"	N/A	N/A	Scrub grass

Comments: No obstructions.



Name	ID	Sensor Type	Date Installed	Latitude	Longitude	Elevation	Gage Height	Anemometer Height	Temperature Sensor Height	Ground type
Guy Hill Ranch	310	P	05/30/88	39:47:48 N	105:19:51 W	8320	10'2"	N/A	N/A	Grass

Comments: Located off of a private road, Guy Hill Ranch Rd.



Name	ID	Sensor Type	Date Installed	Latitude	Longitude	Elevation	Gage Height	Anemometer Height	Temperature Sensor Height	Ground type
Sports Complex	320	P, S	07/03/89	39:48:06 N	105:07:04 W	5420'	9'1"	N/A	N/A	Grass, flat

Comments: Trees ~ 60' to the east and ~75' to the southeast.



Name	ID	Sensor Type	Date Installed	Latitude	Longitude	Elevation	Gage Height	Anemometer Height	Temperature Sensor Height	Ground type
Van Bibber @ Hwy 93	330	P, S	08/14/90	39:48:08 N	105:13:27 W	5900'	11'0"	N/A	N/A	Scrub Grass

Comments: Located ~ 10' from Hwy 93. 40 degree incline.



Name	ID	Sensor Type	Date Installed	Latitude	Longitude	Elevation	Gage Height	Anemometer Height	Temperature Sensor Height	Ground type
Montview Park	400	P, S	06/09/88	39:44:50 N	104:52:47 W	5303'	9'10"	N/A	N/A	Grass

Comments: Located ~ 15' from creek.



Name	ID	Sensor Type	Date Installed	Latitude	Longitude	Elevation	Gage Height	Anemometer Height	Temperature Sensor Height	Ground type
Kelly Dam	410	P, S	09/22/88	39:43:57 N	104:53:19 W	5344'	8'10"	N/A	N/A	Scrub grass

Comments: Located ~ 15' from creek. 35-degree incline.



Name	ID	Sensor Type	Date Installed	Latitude	Longitude	Elevation	Gage Height	Anemometer Height	Temperature Sensor Height	Ground type
Expo Park	420	P, S2	05/21/88	39:43:57 N	104:51:33 W	5458'	9'11"	N/A	N/A	Grass

Comments: Located ~ 45' from pond. 15-degree incline. Duel stream gages.



Name	ID	Sensor Type	Date Installed	Latitude	Longitude	Elevation	Gage Height	Anemometer Height	Temperature Sensor Height	Ground type
Utah Park	430	P, S	05/21/88	39:41:07 N	104:50:37 W	5536'	10'4"	N/A	N/A	Grass

Comments: Pond ~ 15' to north.



Name	ID	Sensor Type	Date Installed	Latitude	Longitude	Elevation	Gage Height	Anemometer Height	Temperature Sensor Height	Ground type
Fire Station # 7	440	P	05/21/88	39:40:33 N	104:49:23 W	5620'	10'6"	N/A	N/A	Grass

Comments: Obstruction will occur due to tree to the E/SE when tree grows ~5 feet in the vertical.



Name	ID	Sensor Type	Date Installed	Latitude	Longitude	Elevation	Gage Height	Anemometer Height	Temperature Sensor Height	Ground type
Havana Park	500	P, S	05/26/88	39:43:59 N	104:51:51 W	5375'	10'2"	N/A	N/A	Grass

Comments: Gage ~ 20 feet from road.



Name	ID	Sensor Type	Date Installed	Latitude	Longitude	Elevation	Gage Height	Anemometer Height	Temperature Sensor Height	Ground type
Virginia Court	510	P	05/21/88	39:42:24 N	104:50:19 W	5550'	9'6"	N/A	N/A	Grass

Comments: 30 foot tree ~ 30 feet to the southeast.



Name	ID	Sensor Type	Date Installed	Latitude	Longitude	Elevation	Gage Height	Anemometer Height	Temperature Sensor Height	Ground type
Jewell Detention	520	P	05/21/88	39:40:54 N	104:51:35 W	5560'	9'2"	N/A	N/A	Grass

Comments: Gage located about 40 feet from road.



Name	ID	Sensor Type	Date Installed	Latitude	Longitude	Elevation	Gage Height	Anemometer Height	Temperature Sensor Height	Ground type
Fire Station # 19	530	P	05/21/88	39:42:38 N	104:55:12 W	5420'	9'6"	N/A	N/A	Concrete

Comments: Gage located in parking lot behind fire station. Large trees to the east.



Name	ID	Sensor Type	Date Installed	Latitude	Longitude	Elevation	Gage Height	Anemometer Height	Temperature Sensor Height	Ground type
Parker/Mississippi	540	P	09/22/88	39:41:46 N	104:53:50 W	5460'	9'4"	N/A	N/A	Grass

Comments: Gage located ~ 10 feet from road. Stream ~ 25' to east.



Name	ID	Sensor Type	Date Installed	Latitude	Longitude	Elevation	Gage Height	Anemometer Height	Temperature Sensor Height	Ground type
Harvard Gulch Park	600	P, S	07/25/89	39:40:20 N	104:58:56 W	5315'	8'10"	N/A	N/A	Grass

Comments: Gage located ~ 15 feet from road. Creek ~ 9 feet to the east.



Name	ID	Sensor Type	Date Installed	Latitude	Longitude	Elevation	Gage Height	Anemometer Height	Temperature Sensor Height	Ground type
Harvard Gulch @ Jackson	610	P, S	07/25/89	39:40:09 N	104:56:33 W	5410'	9'11"	N/A	N/A	Grass

Comments: Gage located ~ 20 feet from Creek.



Name	ID	Sensor Type	Date Installed	Latitude	Longitude	Elevation	Gage Height	Anemometer Height	Temperature Sensor Height	Ground type
Quincy/Highline	620	P	09/19/89	39:38:20 N	104:56:09 W	5490'	9'8"	N/A	N/A	Grass

Comments: Gage located ~ 25 feet from Creek.



Name	ID	Sensor Type	Date Installed	Latitude	Longitude	Elevation	Gage Height	Anemometer Height	Temperature Sensor Height	Ground type
Temple Pond	630	P, S	05/29/87	39:37:55 N	104:53:28 W	5575'	9'8"	N/A	N/A	Grass

Comments: Gage located ~ 20 feet from a detention pond.



Name	ID	Sensor Type	Date Installed	Latitude	Longitude	Elevation	Gage Height	Anemometer Height	Temperature Sensor Height	Ground type
Goldsmith @ Eastman	640	P, S	09/06/89	39:39:22 N	104:54:08 W	5480'	9'2"	N/A	N/A	Grass

Comments: Gage obstructions due to tree to the north and south of gage. Obstructions will increase as trees grow.



Name	ID	Sensor Type	Date Installed	Latitude	Longitude	Elevation	Gage Height	Anemometer Height	Temperature Sensor Height	Ground type
Goldsmith Gulch @ Iliff Pond	650	P, S2	08/25/04	39:40:26 N	104:54:40 W	5440'	9'8"	N/A	N/A	Grass

Comments: Gage located ~ 15 feet from detention pond. 40 degree incline.



Name	ID	Sensor Type	Date Installed	Latitude	Longitude	Elevation	Gage Height	Anemometer Height	Temperature Sensor Height	Ground type
Toll Gate @ 6th	700	P, S	11/07/89	39:43:30 N	104:49:06 W	5400'	9'2"	N/A	N/A	Scrub grass

Comments: Gage located ~ 40 feet from creek. 7 foot tall shed ~ 9 feet to south.



Name	ID	Sensor Type	Date Installed	Latitude	Longitude	Elevation	Gage Height	Anemometer Height	Temperature Sensor Height	Ground type
Horseshoe Park Drop	710	P, S	07/17/89	39:41:14 N	104:48:11 W	5490'	10'1"	N/A	N/A	Scrub grass

Comments: Gage located ~ 20 feet from drop structure.



Name	ID	Sensor Type	Date Installed	Latitude	Longitude	Elevation	Gage Height	Anemometer Height	Temperature Sensor Height	Ground type
Confluence Pond	720	P, S2	07/25/89	39:40:01 N	104:46:37 W	5570'	9'8"	N/A	N/A	Grass

Comments: Gage located ~ 15 feet from drop structure.



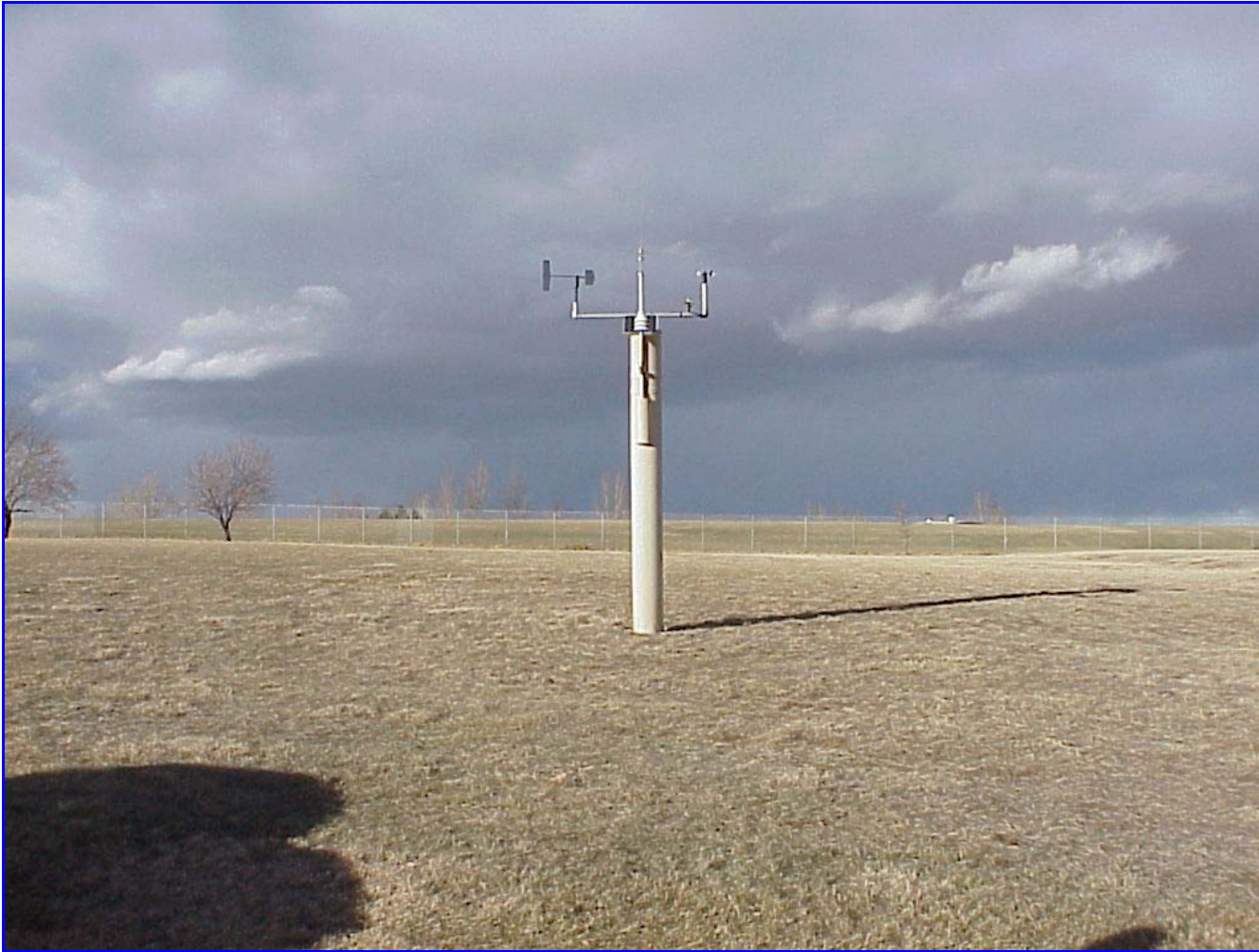
Name	ID	Sensor Type	Date Installed	Latitude	Longitude	Elevation	Gage Height	Anemometer Height	Temperature Sensor Height	Ground type
No Name @ Quincy	730	P, S	08/13/90	39:38:18 N	104:44:55 W	5710'	9'8"	N/A	N/A	Grass

Comments: Gage located ~ 12 feet from creek. Gage tilted ~ 15 degrees to south.



Name	ID	Sensor Type	Date Installed	Latitude	Longitude	Elevation	Gage Height	Anemometer Height	Temperature Sensor Height	Ground type
Smokey Hill	740	R, P	08/13/90	39:36:15 N	104:42:59 W	6080'	9'8"	N/A	N/A	Crushed rock

Comments: Locked gate. Security access needed.



Name	ID	Sensor Type	Date Installed	Latitude	Longitude	Elevation	Gage Height	Anemometer Height	Temperature Sensor Height	Ground type
Quincy Reservoir	750	Wx	01/08/90	39:38:20N	104:46:08W	5750'	9'2"	10'0"	9'3"	Grass, level

Comments: No obstructions.



Name	ID	Sensor Type	Date Installed	Latitude	Longitude	Elevation	Gage Height	Anemometer Height	Temperature Sensor Height	Ground type
Mission Viejo Park	760	P	08/03/89	39:38:55 N	104:47:47 W	5660'	9'1"	N/A	N/A	Grass

Comments: Gage located ~ 10 feet from creek.



Name	ID	Sensor Type	Date Installed	Latitude	Longitude	Elevation	Gage Height	Anemometer Height	Temperature Sensor Height	Ground type
Sable Ditch @ 18th	800	P, S	08/02/89	39:44:43 N	104:48:35 W	5430'	9'4"	N/A	N/A	Grass

Comments: Gage located ~ 5 feet from canal and ~ 20 feet from road.



Name	ID	Sensor Type	Date Installed	Latitude	Longitude	Elevation	Gage Height	Anemometer Height	Temperature Sensor Height	Ground type
Granby Ditch @ 6th	810	P, S	08/03/89	39:43:31 N	104:47:48 W	5455'	8'2"	N/A	N/A	Grass

Comments: Gage located ~ 12 feet from road. Detention pond ~ 30 feet to the south.



Name	ID	Sensor Type	Date Installed	Latitude	Longitude	Elevation	Gage Height	Anemometer Height	Temperature Sensor Height	Ground type
East Toll Gate @ Buckley	820	P, S	08/03/89	39:42:41 N	104:47:28 W	5460'	9'6"	N/A	N/A	Scrub grass

Comments: Gage located ~ 8 feet from road. Creek ~ 9 feet to the east.



Name	ID	Sensor Type	Date Installed	Latitude	Longitude	Elevation	Gage Height	Anemometer Height	Temperature Sensor Height	Ground type
Side Creek Park	830	P	08/03/89	39:41:01 N	104:45:47 W	5600'	9'4"	N/A	N/A	Scrub grass

Comments: Gage located ~25 feet from road.



Name	ID	Sensor Type	Date Installed	Latitude	Longitude	Elevation	Gage Height	Anemometer Height	Temperature Sensor Height	Ground type
Aurora Fire Station 12	840	P	03/30/04	39:45:43 N	104:45:41 W	5433'	9'2"	N/A	N/A	Dirt

Comments: Gage located ~5 feet from fire station parking lot.



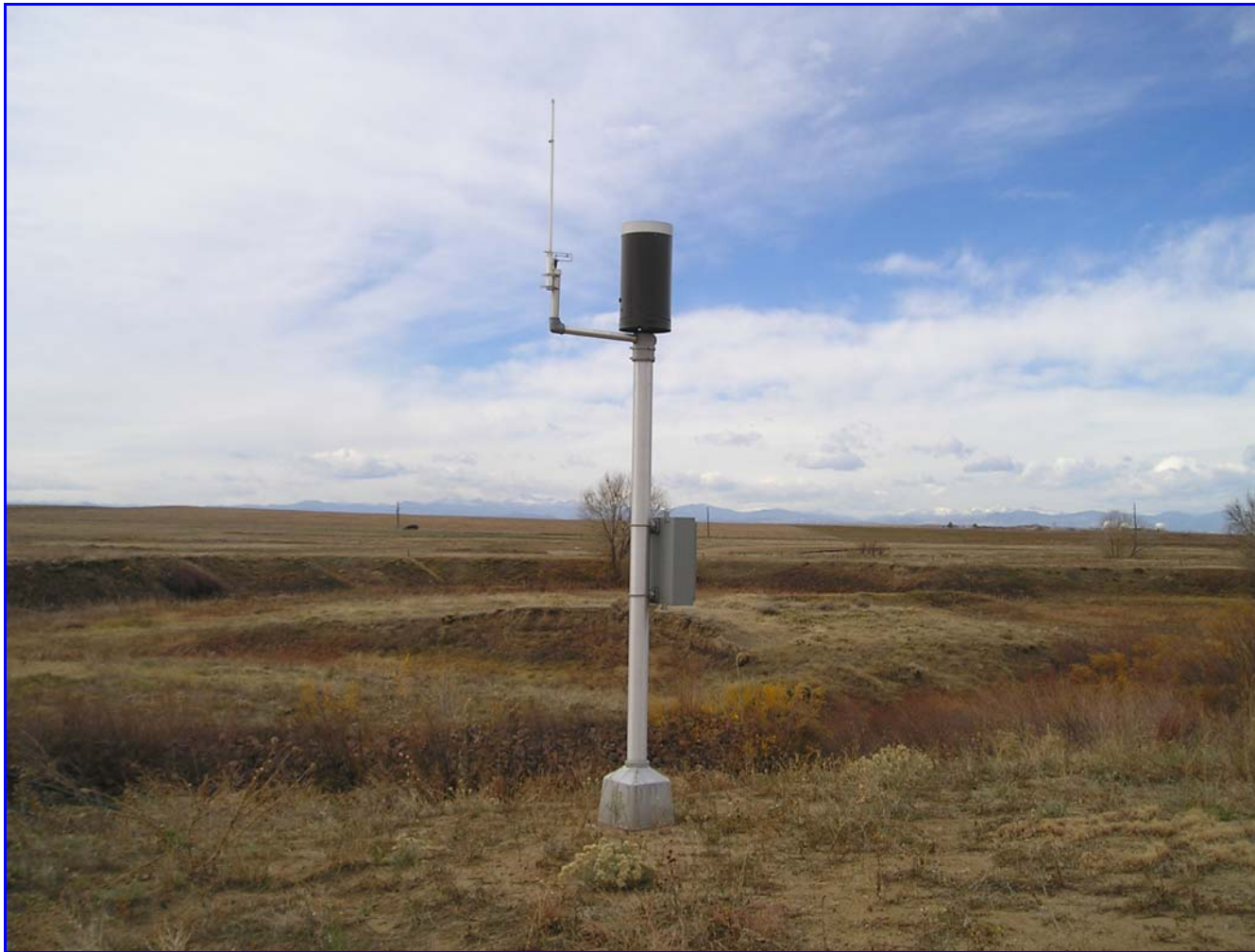
Name	ID	Sensor Type	Date Installed	Latitude	Longitude	Elevation	Gage Height	Anemometer Height	Temperature Sensor Height	Ground type
Flying J Truck Stop	850	P, S	03/30/04	39:45:57 N	104:47:34 W	5387'	9'2"	N/A	N/A	Grass

Comments: Obstruction will occur due to tree to the N when tree grows ~5 feet in the vertical. Gage located ~ 15 feet from pond.



Name	ID	Sensor Type	Date Installed	Latitude	Longitude	Elevation	Gage Height	Anemometer Height	Temperature Sensor Height	Ground type
Sand Creek @ Colfax	860	P, S	02/01/06	39:44:24 N	104:46:48 W	5423'	10'9"	N/A	N/A	Concrete

Comments: Gage located ~ 6 feet from creek.



Name	ID	Sensor Type	Date Installed	Latitude	Longitude	Elevation	Gage Height	Anemometer Height	Temperature Sensor Height	Ground type
Murphy Creek Golf Course	870	P, S	03/30/04	39:41:07 N	104:42:37 W	5614'	10'11"	N/A	N/A	Scrub grass

Comments: Gage located ~ 15 feet from creek and ~ 20 feet from road.



Name	ID	Sensor Type	Date Installed	Latitude	Longitude	Elevation	Gage Height	Anemometer Height	Temperature Sensor Height	Ground type
Aurora Reservoir	900	Wx	11/25/03	39:36:21 N	104:40:27 W	5945'	11'3"	12'0"	10'4"	Scrub grass

Comments: Reservoir located ~ 60 feet to the north. Locked gates to access. Need permission to access.



Name	ID	Sensor Type	Date Installed	Latitude	Longitude	Elevation	Gage Height	Anemometer Height	Temperature Sensor Height	Ground type
Maple Grove Reservoir	1000	P, S	06/02/85	39:45:20 N	105:08:12 W	5519'	9'8"	N/A	N/A	Scrub grass

Comments: Locked gate. Gage located about 5' from gate and ~ 8 feet from reservoir.



Name	ID	Sensor Type	Date Installed	Latitude	Longitude	Elevation	Gage Height	Anemometer Height	Temperature Sensor Height	Ground type
Denver West	1010	P	05/30/02	39:43:54 N	105:09:08 W	5805'	10'2"	N/A	N/A	Scrub grass

Comments: Locked gate. Gage located about 20' from gate.



Name	ID	Sensor Type	Date Installed	Latitude	Longitude	Elevation	Gage Height	Anemometer Height	Temperature Sensor Height	Ground type
NREL/South Table Mountain	1030	P	04/01/85	39:44:26 N	105:10:34 W	6000'	10'1"	N/A	N/A	Scrub grass

Comments: Gage located on a Mesa to the north of NREL. NREL security assistance needed to access gage.



Name	ID	Sensor Type	Date Installed	Latitude	Longitude	Elevation	Gage Height	Anemometer Height	Temperature Sensor Height	Ground type
Lena @ US 6	1040	P, S	06/02/85	39:43:31 N	105:11:34 W	5920'	10'4"	N/A	N/A	Scrub grass

Comments: Gage located ~ 12 feet from road and~ 7 feet from creek.



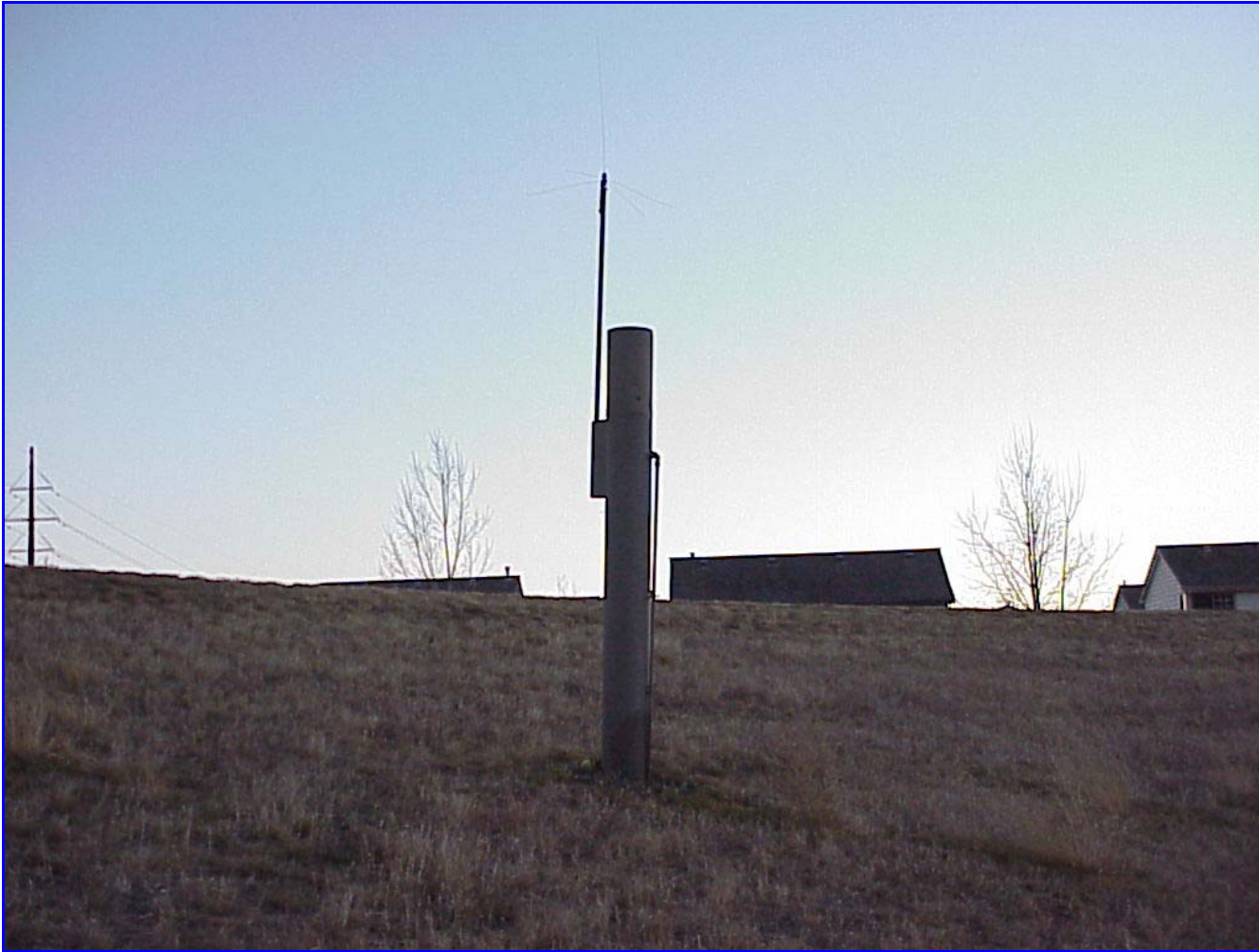
Name	ID	Sensor Type	Date Installed	Latitude	Longitude	Elevation	Gage Height	Anemometer Height	Temperature Sensor Height	Ground type
Jeffco Fairgrounds	1050	P	04/01/85	39:43:14 N	105:10:04 W	5920'	9'6"	N/A	N/A	Scrub grass

Comments: Gage located ~ 30 feet from road.



Name	ID	Sensor Type	Date Installed	Latitude	Longitude	Elevation	Gage Height	Anemometer Height	Temperature Sensor Height	Ground type
Heritage Square	1060	P	04/01/85	39:42:36 N	105:12:44 W	6420'	9'9"	N/A	N/A	Scrub grass

Comments: Gage located Apex Mine property, which is a secured area.



Name	ID	Sensor Type	Date Installed	Latitude	Longitude	Elevation	Gage Height	Anemometer Height	Temperature Sensor Height	Ground type
Louisville Dwy D	1100	P, S	05/06/88	39:58:23 N	105:09:22 W	5464'	7'10"	N/A	N/A	Grass

Comments: Gage located on a 30-degree incline.



Name	ID	Sensor Type	Date Installed	Latitude	Longitude	Elevation	Gage Height	Anemometer Height	Temperature Sensor Height	Ground type
Gunbarrel	1110	P, S	12/01/91	40:04:27 N	105:10:40 W	5225'	9'10"	N/A	N/A	Scrub grass

Comments: Gage accessible by bike path.



Name	ID	Sensor Type	Date Installed	Latitude	Longitude	Elevation	Gage Height	Anemometer Height	Temperature Sensor Height	Ground type
Broomfield Basin	1200	P, S	03/23/89	39:55:40 N	105:03:52 W	5350'	9'8"	N/A	N/A	Scrub grass

Comments: Gage located ~ 35 feet from a pond.



Name	ID	Sensor Type	Date Installed	Latitude	Longitude	Elevation	Gage Height	Anemometer Height	Temperature Sensor Height	Ground type
Hidden Lake	1300	P, S	08/28/01	39:49:07 N	105:02:11 W	5288'	9'2"	N/A	N/A	Grass

Comments: Gage located ~ 12 feet from lake. Presence of vandalism to and around gage.



Name	ID	Sensor Type	Date Installed	Latitude	Longitude	Elevation	Gage Height	Anemometer Height	Temperature Sensor Height	Ground type
Little Dry @ 64th	1310	P, S	08/29/01	39:48:47 N	105:00:50 W	5204'	9'8"	N/A	N/A	Scrub grass

Comments: Gage located ~ 9 feet from road and ~ 15 feet from creek.



Name	ID	Sensor Type	Date Installed	Latitude	Longitude	Elevation	Gage Height	Anemometer Height	Temperature Sensor Height	Ground type
SPR @ 3 rd Avenue	1320	P, S	01/28/03	39:43:18 N	105:00:37 W	5210'	9'8"	N/A	N/A	Grass

Comments: Gage located ~ 5 feet from river. Obstruction will occur due to tree to the south when tree grows ~5 feet in the vertical. Locked gate after business hours.



Name	ID	Sensor Type	Date Installed	Latitude	Longitude	Elevation	Gage Height	Anemometer Height	Temperature Sensor Height	Ground type
Roslyn	1330	P	01/17/03	39:47:50 N	104:54:04 W	5220'	9'1"	N/A	N/A	Grass

Comments: Locked gate after business hours.



Name	ID	Sensor Type	Date Installed	Latitude	Longitude	Elevation	Gage Height	Anemometer Height	Temperature Sensor Height	Ground type
Sanderson @ Xavier	1340	P, S	04/02/03	39:41:04 N	105:03:01 W	5410'	9'6"	N/A	N/A	Grass

Comments: Gage located ~ 5 feet from road and ~ 9 feet from creek.



Name	ID	Sensor Type	Date Installed	Latitude	Longitude	Elevation	Gage Height	Anemometer Height	Temperature Sensor Height	Ground type
Chatfield COE	1350	P	03/06/03	39:33:23 N	105:04:44 W	5545'	9'10"	N/A	N/A	Scrub grass

Comments: Locked gate after business hours. Security access needed. Located in locked fenced enclosure.



Name	ID	Sensor Type	Date Installed	Latitude	Longitude	Elevation	Gage Height	Anemometer Height	Temperature Sensor Height	Ground type
Denver Zoo	1360	P	01/17/03	39:45:03 N	104:57:14 W	5265'	9'10"	N/A	N/A	Dirt

Comments: Locked gate. Security access needed. Obstruction will occur due to tree to the north when tree grows ~10 feet in the vertical



Name	ID	Sensor Type	Date Installed	Latitude	Longitude	Elevation	Gage Height	Anemometer Height	Temperature Sensor Height	Ground type
West Metro Fire	1370	P	02/26/04	39:34:52 N	105:08:16 W	5853'	9'2"	N/A	N/A	Gravel

Comments: Two story building ~ 30 feet to west.



Name	ID	Sensor Type	Date Installed	Latitude	Longitude	Elevation	Gage Height	Anemometer Height	Temperature Sensor Height	Ground type
Upper Sloan Detention	1400	P, S	05/30/87	39:45:13 N	105:04:45 W	5431'	8'11"	N/A	N/A	Scrub grass

Comments: Gage located on a 45-degree incline.



Name	ID	Sensor Type	Date Installed	Latitude	Longitude	Elevation	Gage Height	Anemometer Height	Temperature Sensor Height	Ground type
Diamond Hill	1420	Wx	10/15/90	39:45:14 N	105:00:57 W	5256'	~ 45'	~ 52'	~ 50'	White Nylon

Comments: Tree ~15' to the northeast. Satellite dish ~30' to the northwest. Two story building ~65' to the north.



Name	ID	Sensor Type	Date Installed	Latitude	Longitude	Elevation	Gage Height	Anemometer Height	Temperature Sensor Height	Ground type
Elbert	1440	Wx	06/18/99	39:14:43 N	104:35:20 W	6850'	7'8"	8'3"	7'8"	Scrub grass

Comments: Sonic anemometer. Gage located on private residence.



Name	ID	Sensor Type	Date Installed	Latitude	Longitude	Elevation	Gage Height	Anemometer Height	Temperature Sensor Height	Ground type
Stapleton	1460	Wx	12/02/05	39:46:04 N	104:52:01 W	5279'	12'6"	13'0"	10'10"	Grass

Comments: Located ~ 300 yards east of previous location. Locked gate after business hours. Security access needed to access gage.



Name	ID	Sensor Type	Date Installed	Latitude	Longitude	Elevation	Gage Height	Anemometer Height	Temperature Sensor Height	Ground type
Third Creek @ DIA	1480	P, S	11/19/01	39:53:24 N	104:43:48 W	5186'	~10'	N/A	N/A	Concrete

Comments: Asphalt road 25' to the west. Third creek, box culvert 20' to southeast.



Name	ID	Sensor Type	Date Installed	Latitude	Longitude	Elevation	Gage Height	Anemometer Height	Temperature Sensor Height	Ground type
Powers Park	1500	P, S	04/22/02	39:36:58 N	104:59:50 W	5410'	9'7"	N/A	N/A	Grass

Comments: Graffiti on gage. 35' tree ~ 30 ' to east.



Name	ID	Sensor Type	Date Installed	Latitude	Longitude	Elevation	Gage Height	Anemometer Height	Temperature Sensor Height	Ground type
Marston Lake North	1520	Wx	09/09/02	39:38:19 N	105:03:45 W	5500'	11'3"	11'4"	9'5"	Grass

Comments: Within 100' of concrete and asphalt. Water in canal can alter temp and RH.



Name	ID	Sensor Type	Date Installed	Latitude	Longitude	Elevation	Gage Height	Anemometer Height	Temperature Sensor Height	Ground type
Bear Creek @ Lowell	1530	P, S	10/16/02	39:39:08 N	105:01:58 W	5310'	10'6"	N/A	N/A	N/A

Comments: Obstruction due to tree to the east of gage



Name	ID	Sensor Type	Date Installed	Latitude	Longitude	Elevation	Gage Height	Anemometer Height	Temperature Sensor Height	Ground type
Englewood Dam	1600	P, S	06/11/87	39:35:23 N	104:55:05 W	5570'	9'8"	N/A	N/A	Scrub grass

Comments: Gage on 40-degree incline.



Name	ID	Sensor Type	Date Installed	Latitude	Longitude	Elevation	Gage Height	Anemometer Height	Temperature Sensor Height	Ground type
Slaughterhouse Gulch	1620	P, S	03/23/89	39:36:31 N	104:59:10 W	5470'	9'3"	N/A	N/A	Grass

Comments: Gage located ~ 12 feet from detention pond.



Name	ID	Sensor Type	Date Installed	Latitude	Longitude	Elevation	Gage Height	Anemometer Height	Temperature Sensor Height	Ground type
SPR @ Union	1640	P, S	05/21/98	39:37:57 N	105:00:52 W	5290'	7'6"	N/A	N/A	Concrete

Comments: Locked gate on access road.



Name	ID	Sensor Type	Date Installed	Latitude	Longitude	Elevation	Gage Height	Anemometer Height	Temperature Sensor Height	Ground type
SPR @ Henderson	1660	P, S	04/17/98	39:55:19 N	104:52:00 W	5003'	12'2"	N/A	N/A	Metal

Comments: Gage located ~ 20 feet from river.



Name	ID	Sensor Type	Date Installed	Latitude	Longitude	Elevation	Gage Height	Anemometer Height	Temperature Sensor Height	Ground type
Cherry Creek @ Champa	1700	P, S	05/14/98	39:44:32 N	104:59:58 W	5190'	7'4"	N/A	N/A	Wood

Comments: Obstruction due to Solar panels NW and E of gage opening. Obstruction will occur due to tree to the SW when tree grows ~5 feet in the vertical



Name	ID	Sensor Type	Date Installed	Latitude	Longitude	Elevation	Gage Height	Anemometer Height	Temperature Sensor Height	Ground type
Shop Creek	1710	P	03/30/04	39:37:50 N	104:49:42 W	5608'	10'8"	N/A	N/A	Grass

Comments: Pond ~ 25' to north. Gage on 30-degree incline.



Name	ID	Sensor Type	Date Installed	Latitude	Longitude	Elevation	Gage Height	Anemometer Height	Temperature Sensor Height	Ground type
Cherry Creek @ Steele	1720	P, S	04/08/91	39:42:47 N	104:56:57 W	5310'	8'10"	N/A	N/A	Grass

Comments: Obstruction due to tree to the SE of gage. Obstruction will increase as tree grows.



Name	ID	Sensor Type	Date Installed	Latitude	Longitude	Elevation	Gage Height	Anemometer Height	Temperature Sensor Height	Ground type
Sand Creek Park	1800	P, S	03/24/89	39:45:23 N	104:49:52 W	5330'	9'6"	N/A	N/A	Grass

Comments: Gage located ~ 15 feet from creek.



Name	ID	Sensor Type	Date Installed	Latitude	Longitude	Elevation	Gage Height	Anemometer Height	Temperature Sensor Height	Ground type
Sand Creek @ Mouth	1810	P, S	05/11/90	39:48:39 N	104:57:03 W	5120'	9'6"	N/A	N/A	Metal

Comments: Obstruction will occur due to tree to the NE when tree grows ~5 feet in the vertical. Gage located ~ 15 feet from creek.



Name	ID	Sensor Type	Date Installed	Latitude	Longitude	Elevation	Gage Height	Anemometer Height	Temperature Sensor Height	Ground type
Niver Detention	1900	P, S	05/30/87	39:51:26 N	104:59:18 W	5236'	9'3"	N/A	N/A	Scrub grass

Comments: Gage located on a 35-degree incline.



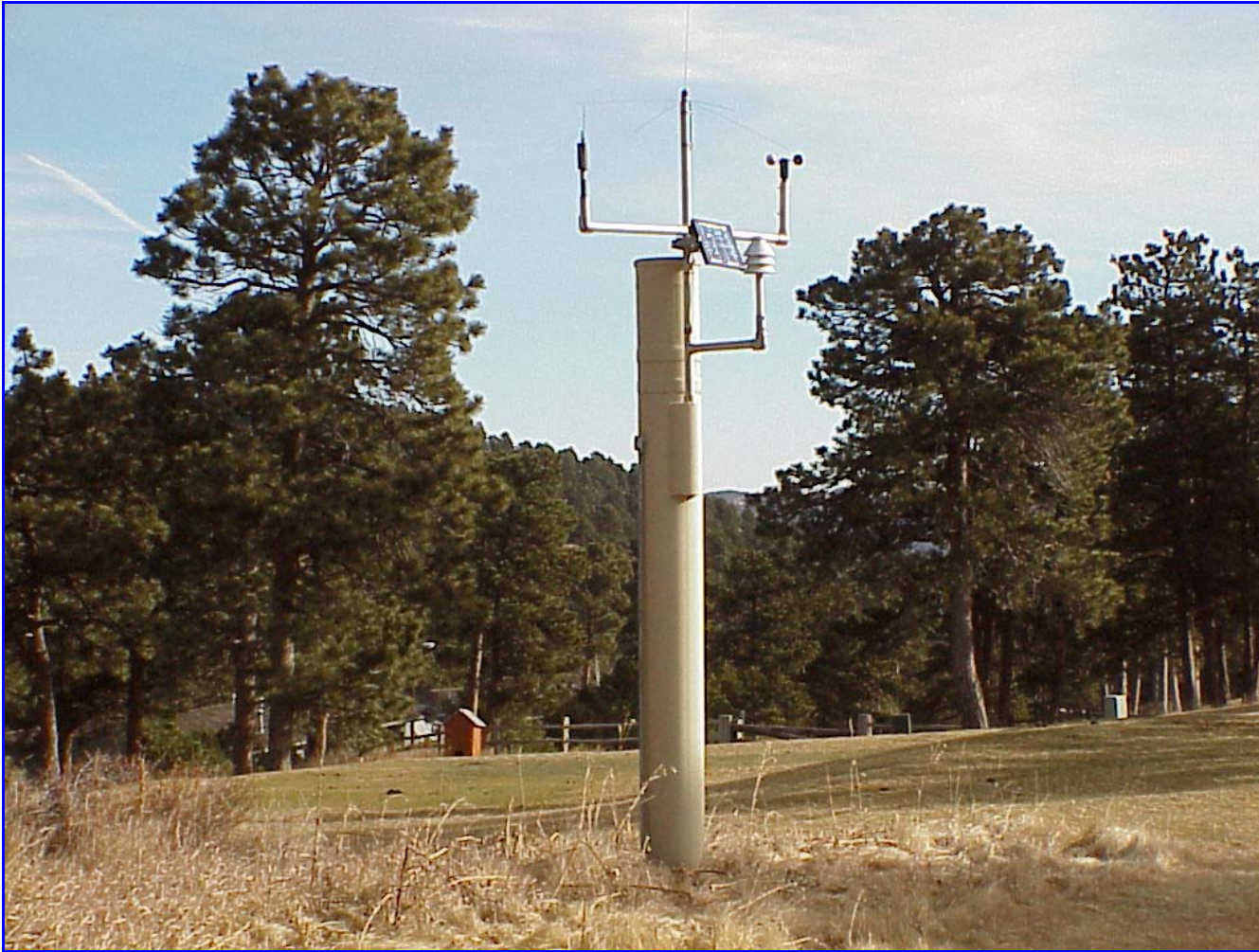
Name	ID	Sensor Type	Date Installed	Latitude	Longitude	Elevation	Gage Height	Anemometer Height	Temperature Sensor Height	Ground type
Brighton	1920	Wx	08/26/98	39:59:36 N	104:49:02 W	4975'	9'3"	9'5"	8'0"	Gravel

Comments: Black tarp 2.5 to the south. Metal machinery 1' to east. Metal piping 3' to north. Black water tank 20' to north 7' off the ground.



Name	ID	Sensor Type	Date Installed	Latitude	Longitude	Elevation	Gage Height	Anemometer Height	Temperature Sensor Height	Ground type
Squaw Mountain	2190	Wx	06/01/00	39:40:52 N	105:29:44 W	11400'	33' 2"	33' 4"	33' 3"	Gravel

Comments: Sonic Anemometer. 1 story cinderblock building to the south. 30' rock pile to the west/northwest. 25' pine tree 4' to the north.



Name	ID	Sensor Type	Date Installed	Latitude	Longitude	Elevation	Gage Height	Anemometer Height	Temperature Sensor Height	Ground type
Hiwan Golf Club	2210	Wx	04/09/91	39:40:20 N	105:20:49 W	7650'	9'3"	10'4"	9'2"	Scrub grass

Comments: Pine trees ~30' to the northwest. Irrigation around gage.



Name	ID	Sensor Type	Date Installed	Latitude	Longitude	Elevation	Gage Height	Anemometer Height	Temperature Sensor Height	Ground type
Bear Creek below Cub Creek	2230	P, S	04/09/91	39:37:56 N	105:19:16 W	7020'	9'7"	N/A	N/A	Grass

Comments: Stream gage ~ 8' from gage. Pines trees ~25' to West. Two story buildings 27' to west. 40' tall tree ~30' to northwest.



Name	ID	Sensor Type	Date Installed	Latitude	Longitude	Elevation	Gage Height	Anemometer Height	Temperature Sensor Height	Ground type
Cold Spring Gulch Confluence	2240	P, S	04/25/91	39:39:58 N	105:16:31 W	6655'	10'2" (estimated)	N/A	N/A	N/A

Comments: 50' bridge ~ 130' to the northwest.



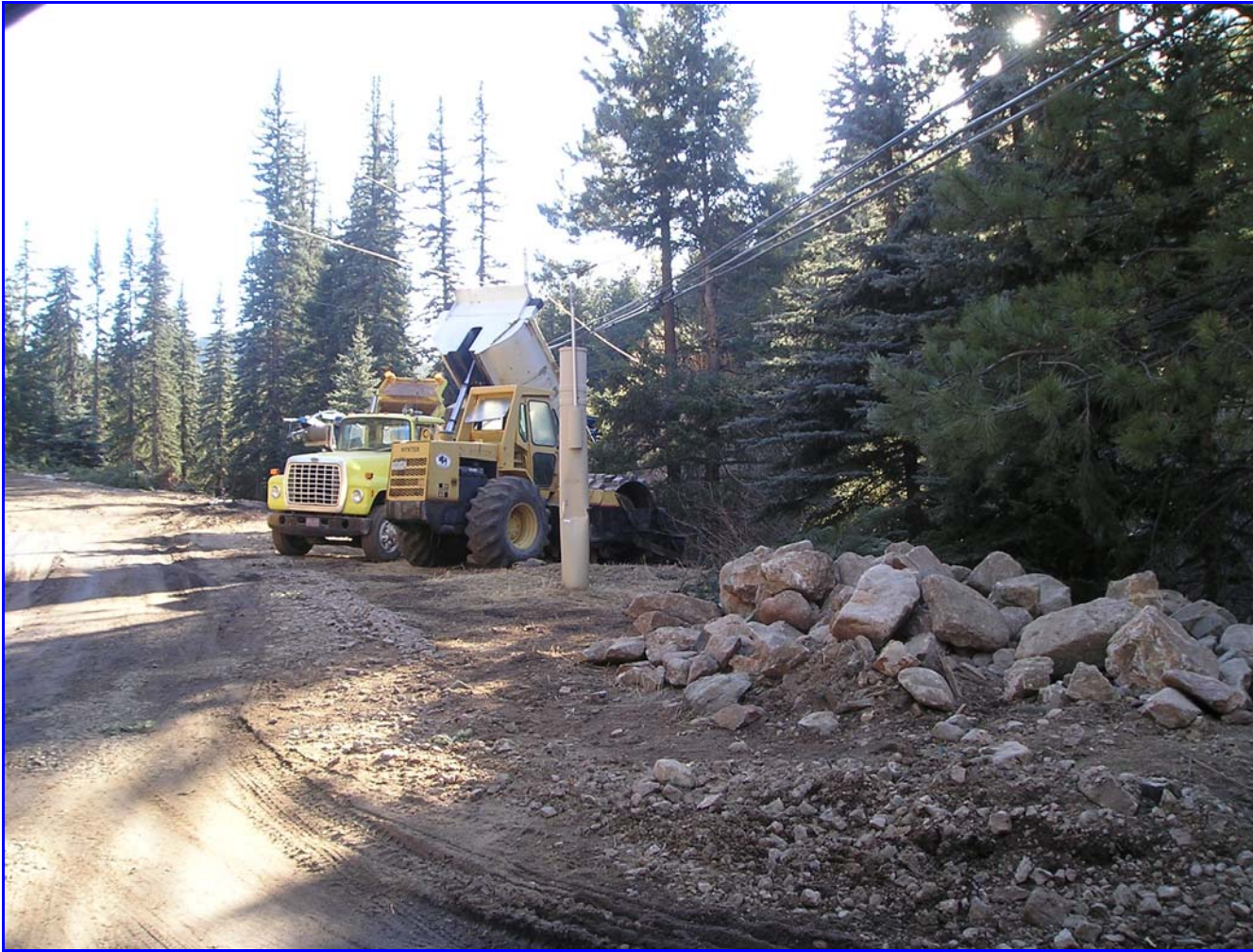
Name	ID	Sensor Type	Date Installed	Latitude	Longitude	Elevation	Gage Height	Anemometer Height	Temperature Sensor Height	Ground type
Rosedale	2250	P, S	05/07/92	39:38:17 N	105:22:50 W	7310'	9'10"	N/A	N/A	Scrub grass

Comments: Creek ~ 25 feet to north.



Name	ID	Sensor Type	Date Installed	Latitude	Longitude	Elevation	Gage Height	Anemometer Height	Temperature Sensor Height	Ground type
Brook Forest	2260	P	05/14/92	39:34:55 N	105:23:52 W	8340'	9'11"	N/A	N/A	Grass

Comments: 30 foot tree ~ 20 feet to the southwest.



Name	ID	Sensor Type	Date Installed	Latitude	Longitude	Elevation	Gage Height	Anemometer Height	Temperature Sensor Height	Ground type
Cub Creek below Blue Creek	2270	P, S	05/12/92	39:35:34 N	105:20:38 W	7560'	10'3"	N/A	N/A	Scrub grass

Comments: Gage obstruction due to large trees to the north. Damage to lower portion of gage, dent.



Name	ID	Sensor Type	Date Installed	Latitude	Longitude	Elevation	Gage Height	Anemometer Height	Temperature Sensor Height	Ground type
Kinney Peak	2280	P	11/20/93	39:36:04 N	105:17:46 W	7700'	9'6"	N/A	N/A	Grass

Comments: Gage located on private property. No vehicle access.



Name	ID	Sensor Type	Date Installed	Latitude	Longitude	Elevation	Gage Height	Anemometer Height	Temperature Sensor Height	Ground type
Genesee Village	2310	P	04/09/91	39:42:07 N	105:15:50 W	7360'	9'10'	N/A	N/A	Grass

Comments: Obstruction will occur due to tree to the south when tree grows ~5 feet in the vertical



Name	ID	Sensor Type	Date Installed	Latitude	Longitude	Elevation	Gage Height	Anemometer Height	Temperature Sensor Height	Ground type
Choke Cherry Reservoir	2320	R, P	04/23/92	39:41:46 N	105:16:29 W	7850'	10'3"	N/A	N/A	Grass

Comments: Locked gate. Need security access.



Name	ID	Sensor Type	Date Installed	Latitude	Longitude	Elevation	Gage Height	Anemometer Height	Temperature Sensor Height	Ground type
Bear Creek @ Morrison	2330	P, S	11/22/93	39:39:11 N	105:11:43 W	5790'	6'8"	N/A	N/A	Scrub grass

Comments: USGS Stream gage housing 4'-11' to the west. Creek ~ 7' to south.



Name	ID	Sensor Type	Date Installed	Latitude	Longitude	Elevation	Gage Height	Anemometer Height	Temperature Sensor Height	Ground type
El Rancho	2340	P	10/04/93	39:42:06N	105:19:45W	7680'	9'2"	N/A	N/A	Scrub grass

Comments: Pine trees ~25' to the west. One story building ~40' to south.



Name	ID	Sensor Type	Date Installed	Latitude	Longitude	Elevation	Gage Height	Anemometer Height	Temperature Sensor Height	Ground type
Idledale	2350	P	05/07/92	39:40:14 N	105:14:29 W	6740'	8'6"	N/A	N/A	Scrub grass

Comments: One story shack 25' to the northwest.



Name	ID	Sensor Type	Date Installed	Latitude	Longitude	Elevation	Gage Height	Anemometer Height	Temperature Sensor Height	Ground type
Indian Hills	2360	P	05/07/92	39:38:13 N	105:15:49 W	7375'	9'2"	N/A	N/A	Scrub grass

Comments: One story shack ~ 30' to east. 20' tree ~ 15' to west.



Name	ID	Sensor Type	Date Installed	Latitude	Longitude	Elevation	Gage Height	Anemometer Height	Temperature Sensor Height	Ground type
Red Rocks Park	2370	P, S	10/27/92	39:40:49N	105:11:50W	6090'	8'6"	N/A	N/A	Scrub Grass

Comments: Gage on a 35-degree slope. No vehicle access must walk to gage.



Name	ID	Sensor Type	Date Installed	Latitude	Longitude	Elevation	Gage Height	Anemometer Height	Temperature Sensor Height	Ground type
Highlands Ranch WTP	2710	Wx	04/21/98	39:33:43 N	105:01:09 W	5550'	9'2"	9'3"	8'7"	Grass

Comments: One story building 30' to the southwest.



Name	ID	Sensor Type	Date Installed	Latitude	Longitude	Elevation	Gage Height	Anemometer Height	Temperature Sensor Height	Ground type
Salisbury Park	2730	Wx	04/13/98	39:33:43 N	105:01:09 W	5870'	11'5"	11'2"	10'4"	Grass, flat

Comments: No obstructions, sprinklers in and around gauge.



Name	ID	Sensor Type	Date Installed	Latitude	Longitude	Elevation	Gage Height	Anemometer Height	Temperature Sensor Height	Ground type
Castle Rock	2750	Wx	07/02/98	39:22:33 N	104:57:58 W	6560'	11'2"	11'2"	10'3"	Scrub grass

Comments: Site sits on a butte. Vegetation: scrub brush 2' to the North.



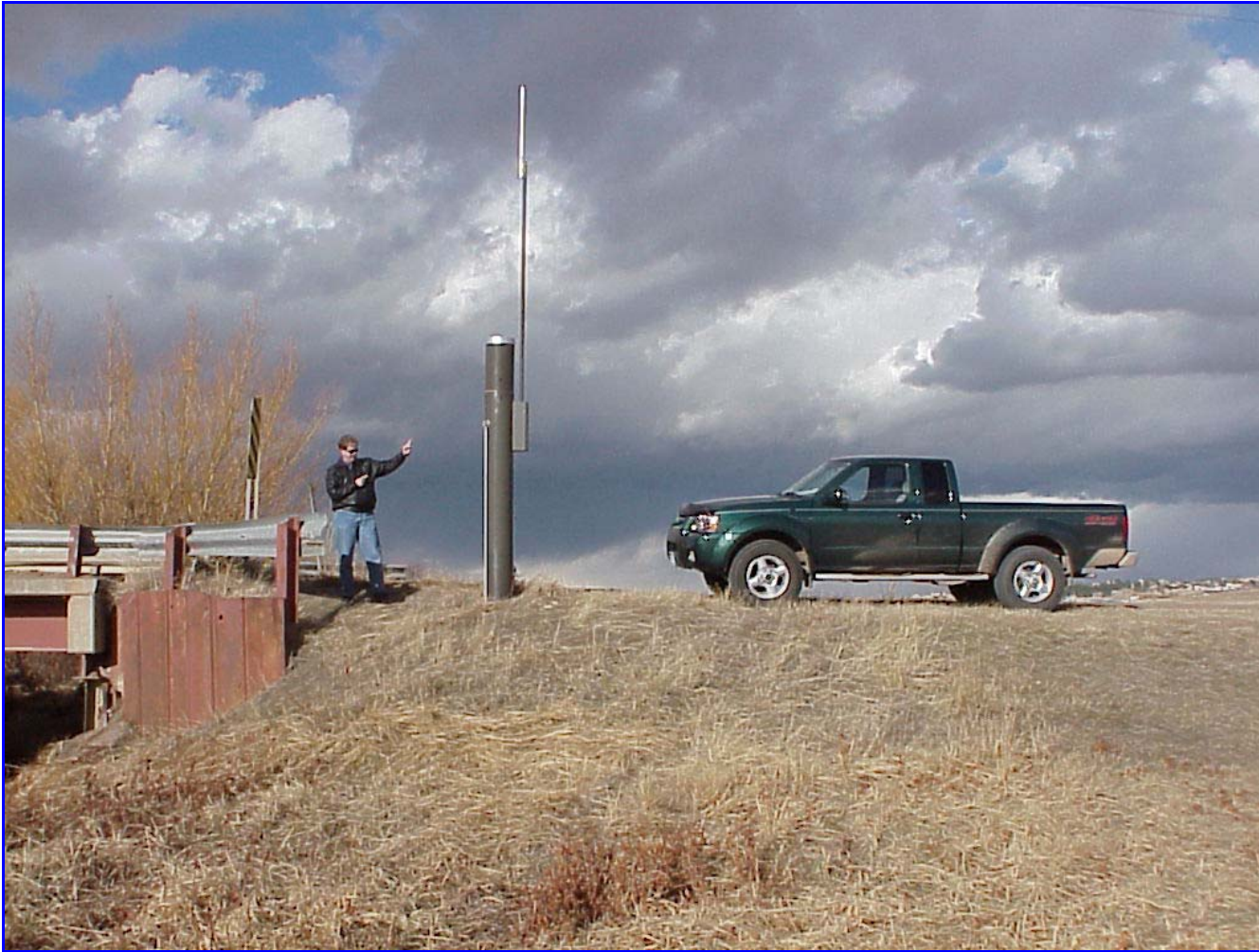
Name	ID	Sensor Type	Date Installed	Latitude	Longitude	Elevation	Gage Height	Anemometer Height	Temperature Sensor Height	Ground type
Pine Cliff Road	2810	P, S	08/27/98	39:22:20 N	104:57:58 W	5930'	9'2"	N/A	N/A	Scrub grass

Comments: Stream ~ 18' to west.



Name	ID	Sensor Type	Date Installed	Latitude	Longitude	Elevation	Gage Height	Anemometer Height	Temperature Sensor Height	Ground type
Haskins Gulch	2820	P, S	04/10/03	39:25:23 N	104:54:16 W	5960'	11'3"	N/A	N/A	N/A

Comments: Stream ~ 18' to northwest. No vehicle access must walk to gage.



Name	ID	Sensor Type	Date Installed	Latitude	Longitude	Elevation	Gage Height	Anemometer Height	Temperature Sensor Height	Ground type
Castle Oaks Road	2830	P, S	06/11/98	39:24:59 N	104:46:07 W	6030'	10'2"	N/A	N/A	Scrub grass

Comments: Stream ~ 25' to west.



Name	ID	Sensor Type	Date Installed	Latitude	Longitude	Elevation	Gage Height	Anemometer Height	Temperature Sensor Height	Ground type
Sulpher Gulch	2840	P, S	11/26/04	39:31:01 N	104:44:45 W	5915'	9'3"	N/A	N/A	Grass

Comments: Gulch ~ 6 ' to east.



Name	ID	Sensor Type	Date Installed	Latitude	Longitude	Elevation	Gage Height	Anemometer Height	Temperature Sensor Height	Ground type
Crescent	4010	P	1979-80	39:55:27 N	105:21:50 W	7760'	9'10"	N/A	N/A	Scrub grass

Comments: 20' tree ~ 20' to the northwest.



Name	ID	Sensor Type	Date Installed	Latitude	Longitude	Elevation	Gage Height	Anemometer Height	Temperature Sensor Height	Ground type
Rio Grande	4020	P	1979-80	39:55:21 N	105:19:33 W	7330'	9'11"	N/A	N/A	Scrub grass

Comments: Gage not accessible by automobile. Must walk to gage.



Name	ID	Sensor Type	Date Installed	Latitude	Longitude	Elevation	Gage Height	Anemometer Height	Temperature Sensor Height	Ground type
Red Garden	4030	P	1979-80	39:55:55 N	105:17:32 W	6360'	10'4"	N/A	N/A	Grass

Comments: Gage not accessible by automobile. Must walk to gage.



Name	ID	Sensor Type	Date Installed	Latitude	Longitude	Elevation	Gage Height	Anemometer Height	Temperature Sensor Height	Ground type
Martin Gulch	4040	P	1979-80	39:56:34 N	105:18:53 W	6520'	10'10"	N/A	N/A	Scrub grass

Comments: Obstruction will occur due to tree to the west when tree grows ~5 feet in the vertical



Name	ID	Sensor Type	Date Installed	Latitude	Longitude	Elevation	Gage Height	Anemometer Height	Temperature Sensor Height	Ground type
Walker Ranch	4050	P	1979-80	39:57:08 N	105:20:21 W	7320'	10'4"	N/A	N/A	Scrub grass

Comments: Gage located in a post wildfire area.



Name	ID	Sensor Type	Date Installed	Latitude	Longitude	Elevation	Gage Height	Anemometer Height	Temperature Sensor Height	Ground type
Lakeshore	4060	P	1979-80	39:57:40 N	105:22:13 W	7700'	10'3"	N/A	N/A	Scrub grass

Comments: Gage obstruction due to trees to the west and northwest of gage. Gage not accessible by vehicle, must walk a short way to access gage.



Name	ID	Sensor Type	Date Installed	Latitude	Longitude	Elevation	Gage Height	Anemometer Height	Temperature Sensor Height	Ground type
Bear Peak	4070	P	1979-80	39:58:16 N	105:18:29 W	6920'	9'4"	N/A	N/A	Scrub grass

Comments: Gage not accessible by vehicle, must walk a short way to access gage.



Name	ID	Sensor Type	Date Installed	Latitude	Longitude	Elevation	Gage Height	Anemometer Height	Temperature Sensor Height	Ground type
Twin Sisters	4080	P	1979-80	39:59:03 N	105:24:43 W	8120'	10'3"	N/A	N/A	Scrub grass

Comments: Gage located on private property. No vehicle access.



Name	ID	Sensor Type	Date Installed	Latitude	Longitude	Elevation	Gage Height	Anemometer Height	Temperature Sensor Height	Ground type
Magnolia	4090	P	1978-79	39:59:26 N	105:22:13 W	7320'	10'2"	N/A	N/A	Scrub grass

Comments: Not accessible by vehicle. Must walk to access gage.



Name	ID	Sensor Type	Date Installed	Latitude	Longitude	Elevation	Gage Height	Anemometer Height	Temperature Sensor Height	Ground type
Filter Plant	4100	P	1978-79	40:00:40 N	105:20:03 W	6360'	9'3"	N/A	N/A	Scrub grass

Comments: Top of gage missing a screw. Security access needed.



Name	ID	Sensor Type	Date Installed	Latitude	Longitude	Elevation	Gage Height	Anemometer Height	Temperature Sensor Height	Ground type
Betasso	4110	P	1978-79	40:01:26 N	105:20:22 W	6480'	10'4"	N/A	N/A	Grass

Comments: Not accessible by vehicle. Must walk a short way to access gage.



Name	ID	Sensor Type	Date Installed	Latitude	Longitude	Elevation	Gage Height	Anemometer Height	Temperature Sensor Height	Ground type
Swiss Peaks	4130	P	1978-79	40:01:22 N	105:25:42 W	8600'	9'11"	N/A	N/A	Grass

Comments: Not accessible by vehicle. Must walk to access gage.



Name	ID	Sensor Type	Date Installed	Latitude	Longitude	Elevation	Gage Height	Anemometer Height	Temperature Sensor Height	Ground type
Logan Mill	4140	P	1978-79	40:02:18 N	105:22:41 W	7200'	10'6"	N/A	N/A	Scrub grass

Comments: Not accessible by vehicle. Must walk to access gage.



Name	ID	Sensor Type	Date Installed	Latitude	Longitude	Elevation	Gage Height	Anemometer Height	Temperature Sensor Height	Ground type
Gold Hill	4150	P	1978-79	40:03:19 N	105:24:28 W	8120'	10'6"	N/A	N/A	Scrub grass

Comments: Not accessible by vehicle. Must walk to access gage.



Name	ID	Sensor Type	Date Installed	Latitude	Longitude	Elevation	Gage Height	Anemometer Height	Temperature Sensor Height	Ground type
Sunshine	4160	P	1978-79	40:03:47 N	105:22:19 W	7560'	10'1"	N/A	N/A	Scrub grass

Comments: Not accessible by vehicle. Must walk to access gage.



Name	ID	Sensor Type	Date Installed	Latitude	Longitude	Elevation	Gage Height	Anemometer Height	Temperature Sensor Height	Ground type
Pine Brook	4170	P	1981-82	40:03:09 N	105:19:20 W	6920'	10'4"	N/A	N/A	Rock

Comments: Obstruction due to tree south of gage. Not accessible by vehicle. Must climb ridge to access gage.



Name	ID	Sensor Type	Date Installed	Latitude	Longitude	Elevation	Gage Height	Anemometer Height	Temperature Sensor Height	Ground type
Gold Lake	4180	P	1981-82	40:05:35 N	105:26:30 W	8560'	10'4"	N/A	N/A	Grass

Comments: Not accessible by vehicle. Must walk to access gage.



Name	ID	Sensor Type	Date Installed	Latitude	Longitude	Elevation	Gage Height	Anemometer Height	Temperature Sensor Height	Ground type
Slaughterhouse	4190	P	1981-82	40:06:06 N	105:23:01 W	7400'	10'7"	N/A	N/A	Scrub grass

Comments: Not accessible by vehicle. Must walk to access gage.



Name	ID	Sensor Type	Date Installed	Latitude	Longitude	Elevation	Gage Height	Anemometer Height	Temperature Sensor Height	Ground type
Lazy Acres	4200	P	1981-82	40:05:58 N	105:19:43 W	7020'	9'4"	N/A	N/A	Scrub grass

Comments: Not accessible by vehicle. Must walk a short distance to access gage.



Name	ID	Sensor Type	Date Installed	Latitude	Longitude	Elevation	Gage Height	Anemometer Height	Temperature Sensor Height	Ground type
Fling's	4220	P	1981-82	40:07:05 N	105:28:44 W	8590'	9'9"	N/A	N/A	Scrub grass

Comments: Gage located ~ 5' from small stream. Gage located on private property.



Name	ID	Sensor Type	Date Installed	Latitude	Longitude	Elevation	Gage Height	Anemometer Height	Temperature Sensor Height	Ground type
Golden Age	4230	P	1981-82	40:07:31 N	105:21:47 W	8160'	9'1"	N/A	N/A	Gravel

Comments: Not accessible by vehicle. Must walk to access gage. Located in a post wildfire area.



Name	ID	Sensor Type	Date Installed	Latitude	Longitude	Elevation	Gage Height	Anemometer Height	Temperature Sensor Height	Ground type
Sunset	4240	P	1981-82	40:02:56 N	105:28:17 W	8680'	9'8"	N/A	N/A	Grass

Comments: Not accessible by vehicle. Must walk to access gage.



Name	ID	Sensor Type	Date Installed	Latitude	Longitude	Elevation	Gage Height	Anemometer Height	Temperature Sensor Height	Ground type
Greer Canyon	4250	P	1981-82	40:09:26 N	105:17:52 W	6080'	9'11"	N/A	N/A	Scrub grass

Comments: Not accessible by vehicle. Must walk to access gage. Locked gate on access road.



Name	ID	Sensor Type	Date Installed	Latitude	Longitude	Elevation	Gage Height	Anemometer Height	Temperature Sensor Height	Ground type
Taylor Mountain	4260	P	1981-82	40:11:28 N	105:29:06 W	8425'	9'4"	N/A	N/A	Scrub grass

Comments: Gage located on private property (behind residence). Must walk a short distance to gage.



Name	ID	Sensor Type	Date Installed	Latitude	Longitude	Elevation	Gage Height	Anemometer Height	Temperature Sensor Height	Ground type
Cannon Mountain	4270	P	1981-82	40:08:58 N	105:26:00 W	8120'	9'5"	N/A	N/A	Scrub grass

Comments: Gage accessible only by 4WD.



Name	ID	Sensor Type	Date Installed	Latitude	Longitude	Elevation	Gage Height	Anemometer Height	Temperature Sensor Height	Ground type
Red Hill	4290	P	1981-82	40:11:08 N	105:17:29 W	6590'	10'2"	N/A	N/A	Scrub grass

Comments: Gage accessible only by 4WD. Locked gate on access road.



Name	ID	Sensor Type	Date Installed	Latitude	Longitude	Elevation	Gage Height	Anemometer Height	Temperature Sensor Height	Ground type
Big Elk Park	4300	P	1981-82	40:13:36 N	105:28:34 W	8600'	10'6"	N/A	N/A	Scrub grass

Comments: Gage accessible only by 4WD. Locked gate on access road.



Name	ID	Sensor Type	Date Installed	Latitude	Longitude	Elevation	Gage Height	Anemometer Height	Temperature Sensor Height	Ground type
Johnny Park	4310	P	1981-82	40:14:39 N	105:24:06 W	7680'	10'2"	N/A	N/A	Scrub grass

Comments: Gage obstruction due to multiple trees located around the gage. Gage accessible only by 4WD.



Name	ID	Sensor Type	Date Installed	Latitude	Longitude	Elevation	Gage Height	Anemometer Height	Temperature Sensor Height	Ground type
Indian Ruins	4330	P	1981-82	40:09:34 N	105:20:18 W	7790'	10'1"	N/A	N/A	Grass

Comments: Gage accessible only by 4WD. 20' tree ~ 15' from gage. Gage obstruction will occur when tree grows about 5' in the vertical.



Name	ID	Sensor Type	Date Installed	Latitude	Longitude	Elevation	Gage Height	Anemometer Height	Temperature Sensor Height	Ground type
Riverside	4340	P	1981-82	40:10:47 N	105:26:36 W	8340'	9'2"	N/A	N/A	Scrub grass

Comments: Gage accessible only by 4WD. Gage located on private property.



Name	ID	Sensor Type	Date Installed	Latitude	Longitude	Elevation	Gage Height	Anemometer Height	Temperature Sensor Height	Ground type
Conifer Hill	4350	P	1981-82	40:10:55 N	105:23:17 W	8120'	9'8"	N/A	N/A	Scrub grass

Comments: Not accessible by vehicle. Must walk to access gage.



Name	ID	Sensor Type	Date Installed	Latitude	Longitude	Elevation	Gage Height	Anemometer Height	Temperature Sensor Height	Ground type
Justice Center	4360	P	1981-82	40:00:52 N	105:17:17 W	5400'	~ 52'	N/A	N/A	N/A

Comments: Gage located on roof. Need security access.



Name	ID	Sensor Type	Date Installed	Latitude	Longitude	Elevation	Gage Height	Anemometer Height	Temperature Sensor Height	Ground type
Little Narrows	4470	P, S	04/21/97	40:12:16 N	105:18:49 W	5620'	10'6"	N/A	N/A	Scrub grass

Comments: Gage located ~ 8' from stream and ~ 25' from road.



Name	ID	Sensor Type	Date Installed	Latitude	Longitude	Elevation	Gage Height	Anemometer Height	Temperature Sensor Height	Ground type
Apple Valley	4490	P	1984-85	40:14:18 N	105:18:37 W	5920'	10'6"	N/A	N/A	Scrub grass

Comments: Gage located on private property.



Name	ID	Sensor Type	Date Installed	Latitude	Longitude	Elevation	Gage Height	Anemometer Height	Temperature Sensor Height	Ground type
Pinewood Springs	4510	P	1984-85	40:15:40 N	105:21:08 W	6850'	9'8"	N/A	N/A	Scrub grass

Comments: Gage located on private property. 35-degree incline.



Name	ID	Sensor Type	Date Installed	Latitude	Longitude	Elevation	Gage Height	Anemometer Height	Temperature Sensor Height	Ground type
Eagle Ridge	4520	R, P	06/11/96	40:14:39 N	105:15:54 W	6280'	9'7"	N/A	N/A	Scrub grass

Comments: Gage located on private property. Accessible only by 4WD.



Name	ID	Sensor Type	Date Installed	Latitude	Longitude	Elevation	Gage Height	Anemometer Height	Temperature Sensor Height	Ground type
Winiger Ridge	4530	P	1984-85	39:56:53 N	105:25:27 W	8130'	9'8"	N/A	N/A	Scrub grass

Comments: Obstruction will occur due to tree to the N when tree grows ~5 feet in the vertical. Gage barely visable from road.



Name	ID	Sensor Type	Date Installed	Latitude	Longitude	Elevation	Gage Height	Anemometer Height	Temperature Sensor Height	Ground type
Jail (Boulder County)	4550	P	06/02/97	40:02:04 N	105:13:43 W	5290'	9'9"	N/A	N/A	Scrub grass

Comments: Must walk a short distance to access gage.



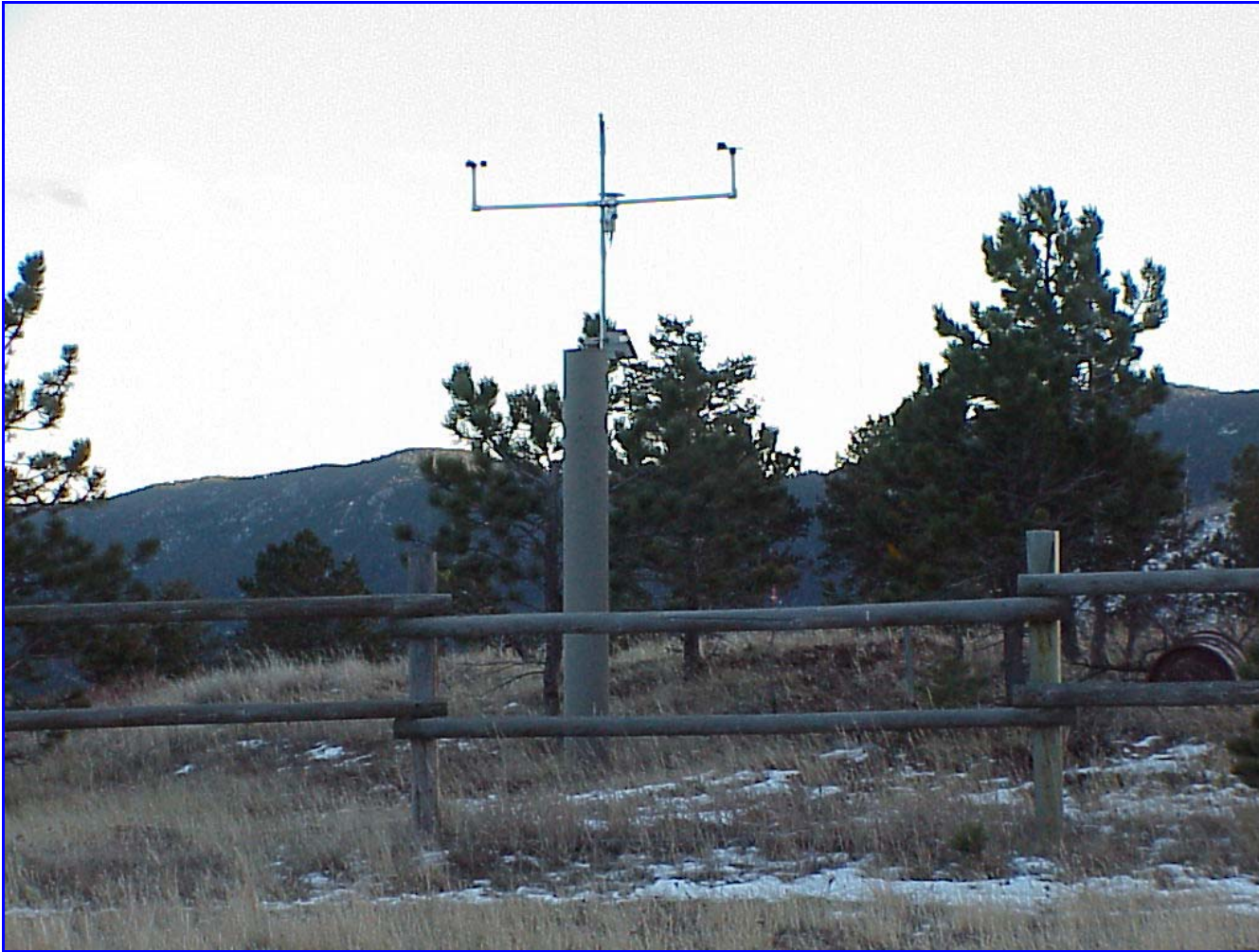
Name	ID	Sensor Type	Date Installed	Latitude	Longitude	Elevation	Gage Height	Anemometer Height	Temperature Sensor Height	Ground type
St. Antons	4570	P	1984-85	39:59:07 N	105:27:46 W	8350'	9'5"	N/A	N/A	Scrub grass

Comments: Gage obstruction due to trees to the west and southwest of gage.



Name	ID	Sensor Type	Date Installed	Latitude	Longitude	Elevation	Gage Height	Anemometer Height	Temperature Sensor Height	Ground type
Ward	4710	Wx	07/22/97	40:02:07 N	105:32:26 W	9700'	11'5"	11'0"	10'5"	Scrub grass

Comments: Gage located on 15-degree incline.



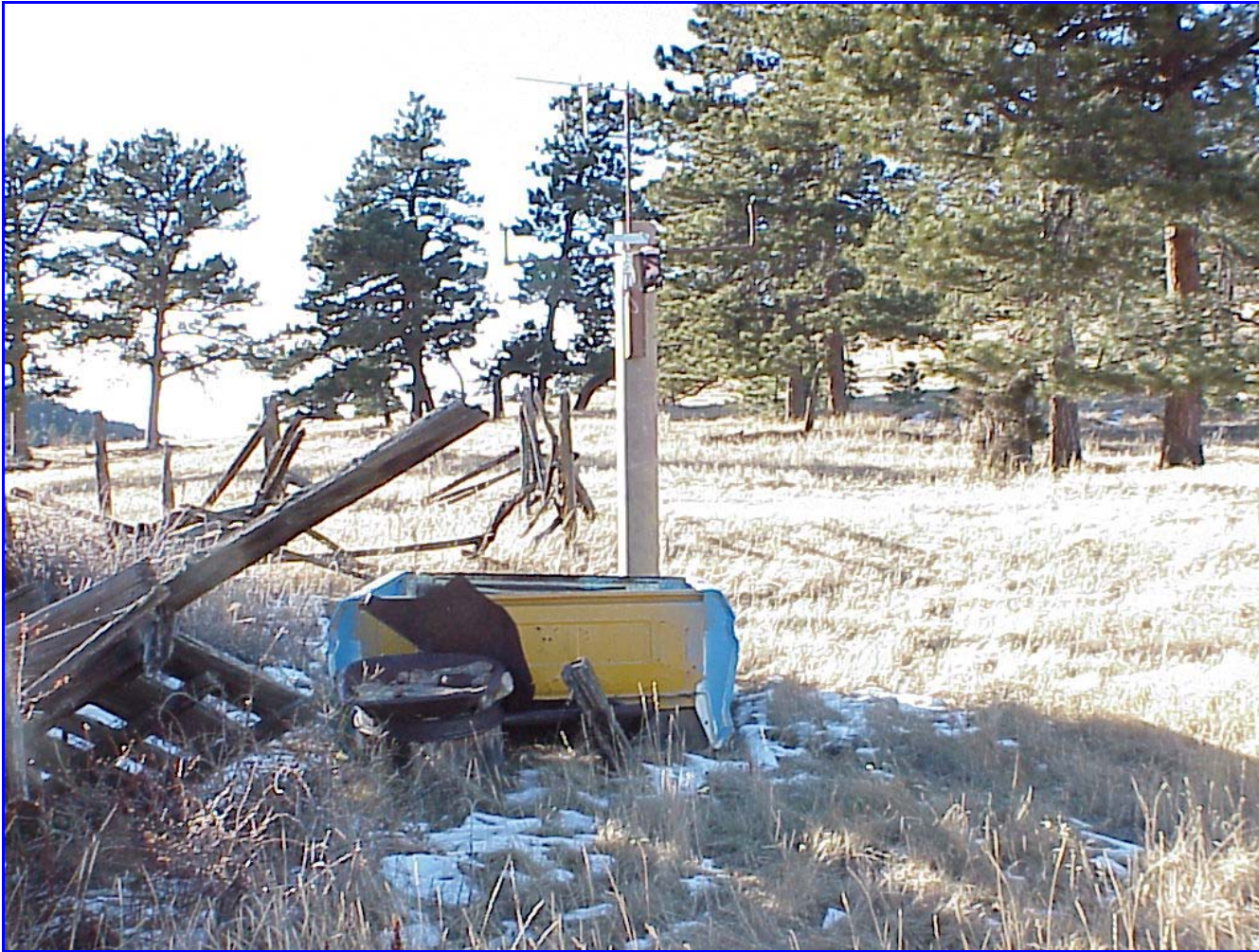
Name	ID	Sensor Type	Date Installed	Latitude	Longitude	Elevation	Gage Height	Anemometer Height	Temperature Sensor Height	Ground type
Sugarloaf	4730	Wx	06/23/97	40:01:05 N	105:24:13 W	7860'	9'2"	11'1"	10'8"	Grass, flat

Comments: Pine Trees ~10' to the west. One story building to the northeast.



Name	ID	Sensor Type	Date Installed	Latitude	Longitude	Elevation	Gage Height	Anemometer Height	Temperature Sensor Height	Ground type
Louisville Lake	4750	Wx	98/07/26	39:59:02 N	105:09:02 W	5580'	10'9"	10'	10'8"	Grass

Comments: Water tank to 0.25 miles to the north. Louisville Lake 0.10 miles to the west. Concrete 60' to the south. Concrete 200' to the southeast. One story building ~120' to the southwest. Housing development 0.25 miles to the south and southeast.



Name	ID	Sensor Type	Date Installed	Latitude	Longitude	Elevation	Gage Height	Anemometer Height	Temperature Sensor Height	Ground type
Cal-Wood Ranch	4770	Wx	06/20/97	40:08:52 N	105:23:23 W	4770'	10'4"	10'2"	9'6"	Grass

Comments: Large hill to the North. Forestation ~120' to the Northwest. 30-degree incline.



Name	ID	Sensor Type	Date Installed	Latitude	Longitude	Elevation	Gage Height	Anemometer Height	Temperature Sensor Height	Ground type
Button Rock	4790	Wx	05/11/92	40:13:15 N	105:22:07 W	6500'	7'5"	7'2"	6'2"	Grass, flat

Comments: Hill to North. Button Rock Reservoir ~ 10 miles to the southwest.



Name	ID	Sensor Type	Date Installed	Latitude	Longitude	Elevation	Gage Height	Anemometer Height	Temperature Sensor Height	Ground type
Shanahan Ridge	4810	P	09/19/02	39:57:41 N	105:15:55 W	5840'	9'6"	N/A	N/A	Scrub grass

Comments: Water tank ~ 70' to west. Must walk ~ 40' to access gage.



Name	ID	Sensor Type	Date Installed	Latitude	Longitude	Elevation	Gage Height	Anemometer Height	Temperature Sensor Height	Ground type
Doudy Draw	4820	P	09/20/02	39:55:56 N	105:15:25 W	5740'	10'1"	N/A	N/A	Scrub grass

Comments: Access gage on hiking trail. Creek ~ 35' to southwest.



Name	ID	Sensor Type	Date Installed	Latitude	Longitude	Elevation	Gage Height	Anemometer Height	Temperature Sensor Height	Ground type
SBC @ Sans Souci	4830	P, S	09/24/02	39:57:28 N	105:14:09 W	5470'	9'11"	N/A	N/A	Scrub grass

Comments: Obstructions will occur due to tree to the E and W when both trees grows ~5 feet in the vertical. Gage not accessible by vehicle. Must walk to access gage.



Name	ID	Sensor Type	Date Installed	Latitude	Longitude	Elevation	Gage Height	Anemometer Height	Temperature Sensor Height	Ground type
SBC @ S. Boulder Ditch	4840	P, S	10/09/02	39:58:21 N	105:13:23 W	5400'	10'2"	N/A	N/A	Scrub grass

Comments: Locked gate on access road. Gage not accessible by vehicle. Must walk to access gage.



Name	ID	Sensor Type	Date Installed	Latitude	Longitude	Elevation	Gage Height	Anemometer Height	Temperature Sensor Height	Ground type
Porphory Mountain	4850	P	07/07/04	40:07:11 N	105:23:16 W	7347'	10'10"	N/A	N/A	Gravel

Comments: Gage located in a post wildfire area.



Name	ID	Sensor Type	Date Installed	Latitude	Longitude	Elevation	Gage Height	Anemometer Height	Temperature Sensor Height	Ground type
Fairview Peak	4860	P	08/11/04	40:08:04 N	105:20:54 W	8260'	10'9"	N/A	N/A	Gravel

Comments: Locked gate on access road. Gage located in a post wildfire area. Gage on a 30-degree-incline.